

South Bay 410

— SOUTH —
BAY

U-410
SUPERFICIES

M2 INTERIORES : 84.41

M2 EXTERIORES : 14.85

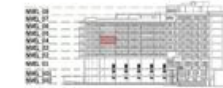
M2 TOTALES : 99.26



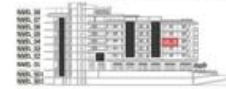
NORTE:



FACHADA NORTE (OCEANO)



FACHADA DESDE CARRETERA



VISTA RENDER

MI S Vallarta Nayarit Composita

ESCALA:

1:75



PROPERTY DETAILS

Price: **\$ 711,142 USD**

Location: **CENTRO SOUTH**

Type:	Condos	Bedrooms:	2 bd
Total Baths:	2	BuildingAreaTotal:	1068.03
PrimaryView:	Ocean	SecondaryView:	City
PetFriendly:	<input checked="" type="checkbox"/>	Parking:	Parking on Property

