



PAVILION

BUCERIAS



PAVILION
BUCERIAS

STREAMER
7-70
THE BAKERY
ALMA JATO

Pavilion Bucerias is a development with an architectural design that stands out for its features in natural stone, wooden terraces, and tempered glass railings that harmonize beautifully with its surroundings.

The project has exclusive one and two-bedroom condominiums, all with dining room, kitchen, full bathrooms, service area, and terraces.

Parking and storage room available.

www.pavilionbucerias.com



The perfect home for an unbeatable beach lifestyle, that you will never want to leave!



Beach, waves, Tranquility

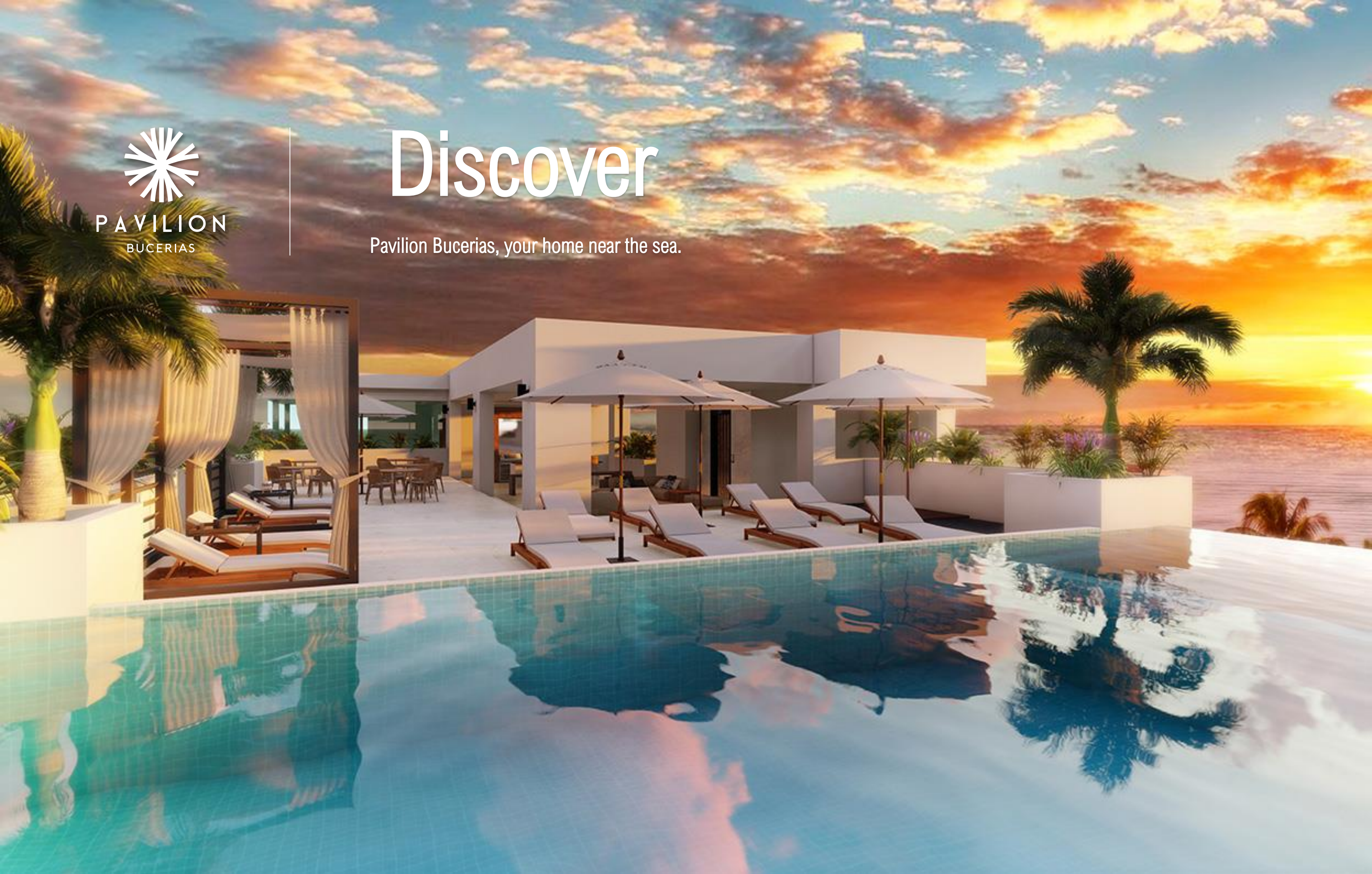
Pavilion Bucerias, a walk to Paradise near the beach





Discover

Pavilion Bucerias, your home near the sea.





PAVILION
BUCERIAS

Breathe, Enjoy, Live.

The perfect place to meet



DEVELOPMENT

SPECIFICATIONS



Terrace . Level 7 – Common Amenities:

Panoramic view terrace
Infinity Pool
Jacuzzi
Lounge area with BBQ
Sunshades and lounge chairs
Fitness area
Bathrooms
Showers

Ground Level – Common areas:

Lobby
Reception area
Storage area
Parking

Additional Amenities:

CCTV system
Controlled Access in main entrance
Elevator, 11-person capacity
On-site administration
24-hours security

Monthly dues per m2:

\$70 PESOS per m2

Dues include:

Water, gas, maintenance of
common areas,
Security 24h





Enjoy life by
The sea





PAVILION
BUCERIAS



PAVILION
BUCERIAS

UNIT

SPECIFICATIONS

Interiors

- Porcelain tile flooring
- Treated wooden doors and closets
- Glass windows with PVC frames
- Tempered glass railings
- TV connections, phone, and internet
- Minisplit AC
- Independent hot water heater
- Service area for stack washer and dryer

Kitchen

- Granite countertops
- Porcelain tile flooring
- Textured, laminated integrated cabinets
- Extractor hood
- Gas cooktop
- Gas oven
- Stainless steel sink and faucets
- Dishwasher

Bathrooms

- Porcelain tile flooring
- Marble vanity countertops
- Overlay sink
- Quality chrome faucets accessories
- Tempered glass shower doors



PROTOTYPE 01

Distribution:

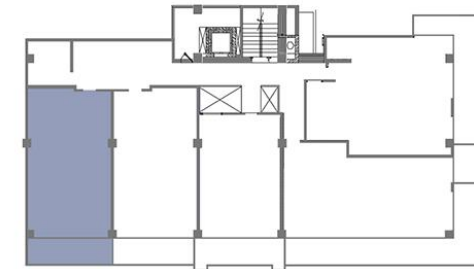
- 2 Bedrooms with closet, 1 bedroom has wooden sliding doors that opens to living room
- Second bedroom with closet
- 2 full bathrooms
- Space for stack washer and dryer
- Balcony
- Kitchen, Living and Dining Area

Finishes:

- Porcelain tile flooring
- Treated wooden doors and closets
- Glass Windows with PVC frames
- Granite kitchen counter
- Marble vanity
- Tempered Glass Railing
- Wiring for TV Cable, phone line and internet
- Minisplit Air Conditioner
- Water heater
- Preparation for Ceiling Fans installation
- Stainless Steel sink
- Dishwasher



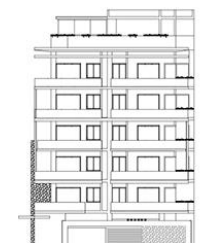
LAYOUT



FRONT VIEW



SIDE VIEW



UNITS – TOTAL AREA

Unit	Interior sq.ft.	Terrace sq.ft.	Total Area
201	859.50	134.66	994.15 sq.ft.
301	859.50	134.66	994.15 sq.ft.
401	859.50	134.66	994.15 sq.ft.
501	859.50	134.66	994.15 sq.ft.
601	859.50	134.66	994.15 sq.ft.

SPECIFICATIONS: THESE FLOOR PLANS MAY BE SUBJECT TO MINOR CHANGES AND/OR SMALL ADJUSTMENTS IN MEASUREMENTS, DIMENSIONS AND LAYOUTS DUE TO TECHNICAL REQUIREMENTS IN THE COURSE OF THE PHYSICAL CONSTRUCTION.

PROTOTYPE 02

Distribution:

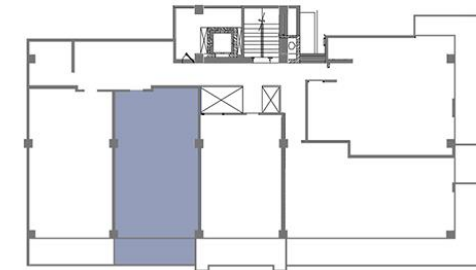
- Master bedroom with walk closet
- Second bedroom with closet
- 2 full bathrooms
- Space for stack washer and dryer
- Balcony
- Kitchen, Living and Dining Area

Finishes:

- Porcelain tile flooring
- Treated wooden doors and closets
- Glass Windows with PVC frames
- Granite kitchen counter
- Marble vanity
- Tempered Glass Railing
- Wiring for TV Cable, phone line and internet
- Minisplit Air Conditioner
- Water heater
- Preparation for Ceiling Fans installation
- Stainless Steel sink
- Dishwasher



LAYOUT



FRONT VIEW

SIDE VIEW



UNITS – TOTAL AREA

Unit	Interior sq.ft.	Terrace sq.ft.	Total Area
202	800.71	141.0	941.71 sq.ft.
302	800.71	141.0	941.71 sq.ft.
402	800.47	139.0	939.47 sq.ft.
502	800.73	145.0	945.73 sq.ft.
602	800.73	145.0	945.73 sq.ft.

SPECIFICATIONS: THESE FLOOR PLANS MAY BE SUBJECT TO MINOR CHANGES AND/OR SMALL ADJUSTMENTS IN MEASUREMENTS, DIMENSIONS AND LAYOUTS DUE TO TECHNICAL REQUIREMENTS IN THE COURSE OF THE PHYSICAL CONSTRUCTION.



PROTOTYPE 03A

Distribution:

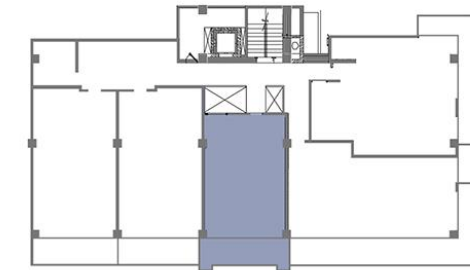
- 1 Bedroom with closet, wooden sliding doors that opens to living room
- 1 full bathroom
- Space for stack washer and dryer
- Balcony
- Kitchen, Living and Dining Area
- Floors 2 and 3

Finishes:

- Porcelain tile flooring
- Treated wooden doors and closets
- Glass Windows with PVC frames
- Granite kitchen counter
- Marble vanity
- Tempered Glass Railing
- Wiring for TV Cable, phone line and internet
- Minisplit Air Conditioner
- Water heater
- Preparation for Ceiling Fans installation
- Stainless Steel sink
- Dishwasher



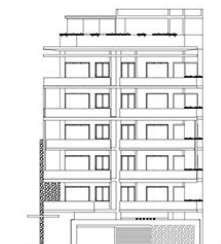
LAYOUT



FRONT VIEW



SIDE VIEW



UNITS – TOTAL AREA

Unit	Interior sq.ft.	Terrace sq.ft.	Total Area
203	610.1	139.75	749.85 sq.ft.
303	610.1	148.11	758.21 sq.ft.

SPECIFICATIONS: THESE FLOOR PLANS MAY BE SUBJECT TO MINOR CHANGES AND/OR SMALL ADJUSTMENTS IN MEASUREMENTS, DIMENSIONS AND LAYOUTS DUE TO TECHNICAL REQUIREMENTS IN THE COURSE OF THE PHYSICAL CONSTRUCTION.



PROTOTYPE 03B

Distribution:

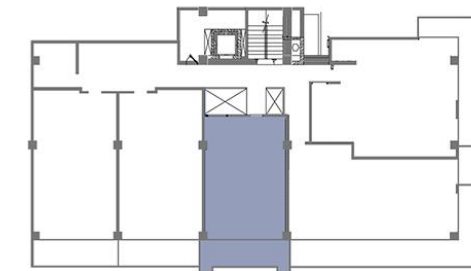
- 1 Bedroom with closet, wooden sliding doors that opens to living room
- 2 full bathrooms
- Space for stack washer and dryer
- Balcony
- Kitchen, Living and Dining Area
- Floors 4 to 6

Finishes:

- Porcelain tile flooring
- Treated wooden doors and closets
- Glass Windows with PVC frames
- Granite kitchen counter
- Marble vanity
- Tempered Glass Railing
- Wiring for TV Cable, phone line and internet
- Minisplit Air Conditioner
- Water heater
- Preparation for Ceiling Fans installation
- Stainless Steel sink
- Dishwasher



LAYOUT



FRONT VIEW

SIDE VIEW



UNITS – TOTAL AREA			
Unit	Interior sq.ft.	Terrace sq.ft.	Total Area
403	745.1	171.13	916.28 sq.ft.
503	745.1	135.13	880.2 sq.ft.
603	745.1	135.13	880.2 sq.ft.

SPECIFICATIONS: THESE FLOOR PLANS MAY BE SUBJECT TO MINOR CHANGES AND/OR SMALL ADJUSTMENTS IN MEASUREMENTS, DIMENSIONS AND LAYOUTS DUE TO TECHNICAL REQUIREMENTS IN THE COURSE OF THE PHYSICAL CONSTRUCTION.



PROTOTYPE 04

Distribution:

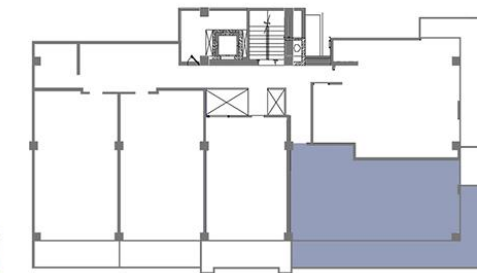
- Corner unit
- 2 Bedrooms with closet
- 2 full bathrooms
- Space for stack washer and dryer
- Wraparound balcony
- Kitchen, Living and Dining Area
- Some units has ocean view

Finishes:

- Porcelain tile flooring
- Treated wooden doors and closets
- Glass Windows with PVC frames
- Granite kitchen counter
- Marble vanity
- Tempered Glass Railing
- Wiring for TV Cable, phone line and internet
- Minisplit Air Conditioner
- Water heater
- Preparation for Ceiling Fans installation
- Stainless Steel sink
- Dishwasher



LAYOUT



FRONT VIEW



SIDE VIEW



UNITS – TOTAL AREA

Unit	Interior sq.ft.	Terrace sq.ft.	Total Area
204	964.88	412.6	1,377.48 sq.ft.
304	964.88	321.84	1,286.72 sq.ft.
404	964.88	261.78	1,226.66 sq.ft.
504	964.88	334.76	1,299.64 sq.ft.
604	964.88	334.76	1,299.64 sq.ft.

SPECIFICATIONS: THESE FLOOR PLANS MAY BE SUBJECT TO MINOR CHANGES AND/OR SMALL ADJUSTMENTS IN MEASUREMENTS, DIMENSIONS AND LAYOUTS DUE TO TECHNICAL REQUIREMENTS IN THE COURSE OF THE PHYSICAL CONSTRUCTION.

PROTOTYPE 05



Distribution:

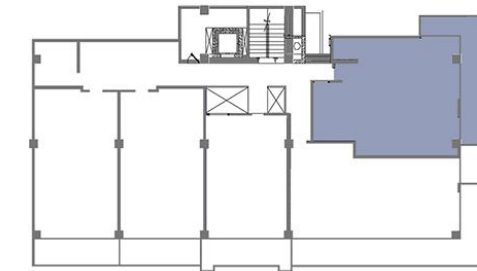
- Corner unit
- 2 Bedrooms with closet
- 2 full bathrooms
- Space for stack washer and dryer
- Wraparound balcony
- Kitchen, Living and Dining Area
- Some units has ocean view

Finishes:

- Porcelain tile flooring
- Treated wooden doors and closets
- Glass Windows with PVC frames
- Granite kitchen counter
- Marble vanity
- Tempered Glass Railing
- Wiring for TV Cable, phone line and internet
- Minisplit Air Conditioner
- Water heater
- Preparation for Ceiling Fans installation
- Stainless Steel sink
- Dishwasher



LAYOUT



FRONT VIEW



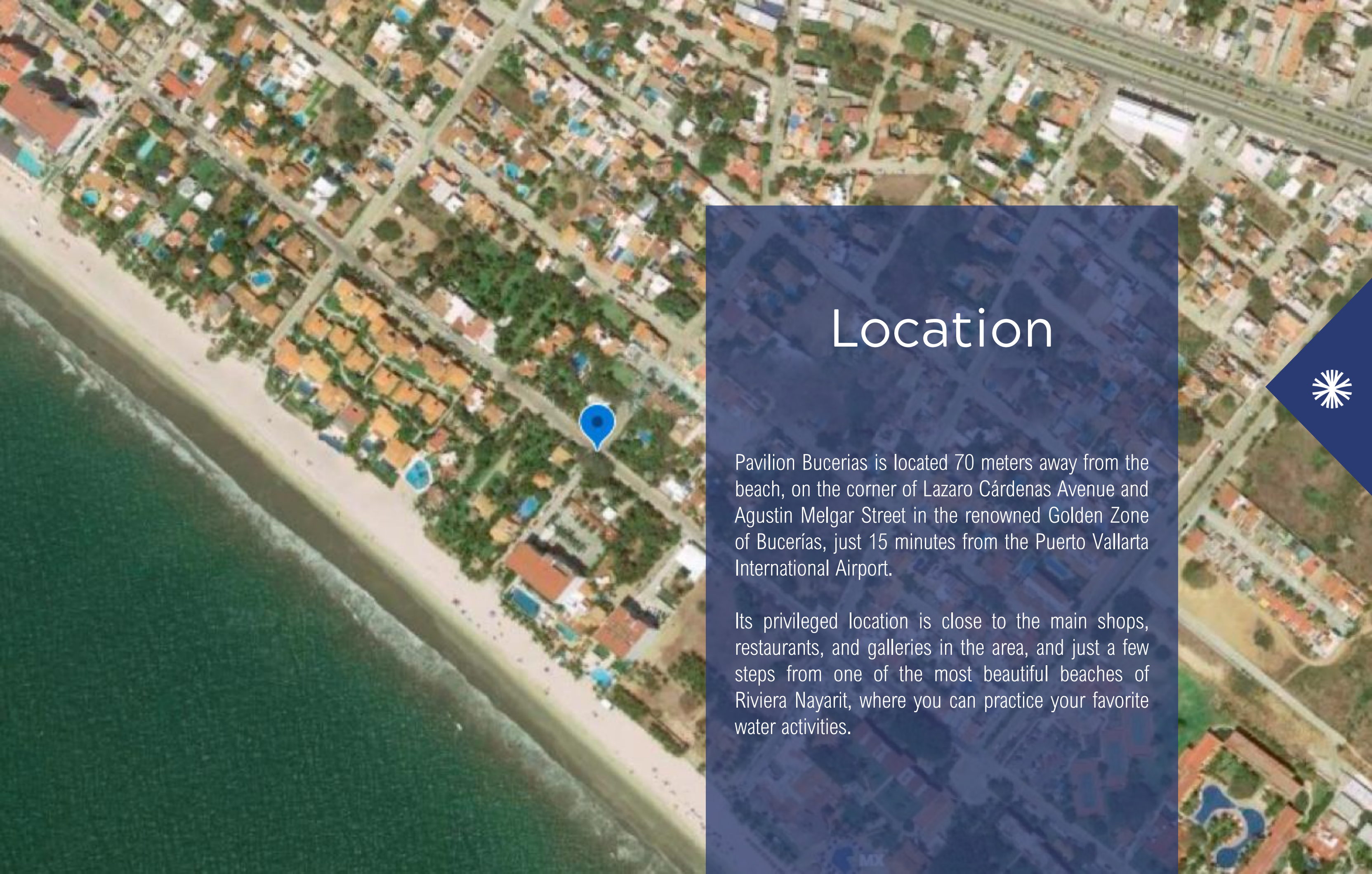
SIDE VIEW



UNITS – TOTAL AREA			
Unit	Interior sq.ft.	Terrace sq.ft.	Total Area
205	914.93	264.0	1,178.93 sq.ft.
305	914.93	264.0	1,178.93 sq.ft.
405	914.93	209.79	1,124.72 sq.ft.
505	914.93	273.73	1,188.66 sq.ft.
605	914.93	273.73	1,188.66 sq.ft.

SPECIFICATIONS: THESE FLOOR PLANS MAY BE SUBJECT TO MINOR CHANGES AND/OR SMALL ADJUSTMENTS IN MEASUREMENTS, DIMENSIONS AND LAYOUTS DUE TO TECHNICAL REQUIREMENTS IN THE COURSE OF THE PHYSICAL CONSTRUCTION.





Location



Pavilion Bucerías is located 70 meters away from the beach, on the corner of Lazaro Cárdenas Avenue and Agustin Melgar Street in the renowned Golden Zone of Bucerías, just 15 minutes from the Puerto Vallarta International Airport.

Its privileged location is close to the main shops, restaurants, and galleries in the area, and just a few steps from one of the most beautiful beaches of Riviera Nayarit, where you can practice your favorite water activities.



Bucerías is a quiet, coastal town located in the Banderas Bay along the Riviera Nayarit. It is characterized by its cobblestoned streets, brightly painted houses, its main square, and a craft market. The Golden Zone stands out for its galleries, restaurants, and bars located within walking distance on Ave. Lazaro Cárdenas.

The beach of Bucerías with its calm waves is ideal for families with children and is distinguished by its golden sand, in addition to being the longest in Banderas Bay, which is why it is chosen by visitors and locals to enjoy long walks.





Beach Living

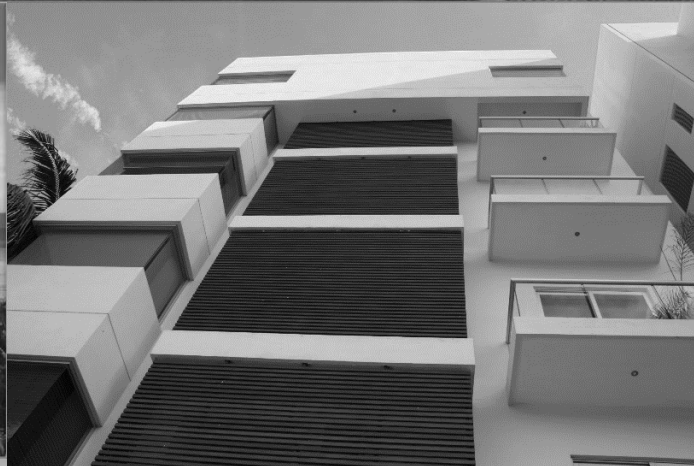
Designed to enjoy beach living as a family, as a couple or as a single, Pavilion Bucerias is a place where each owner will find the ideal setting close by, whether to enjoy sport water sports, extreme adventures or to relax in the comfort and tranquility in their own home at a great location.





PAVILION
BUCERÍAS

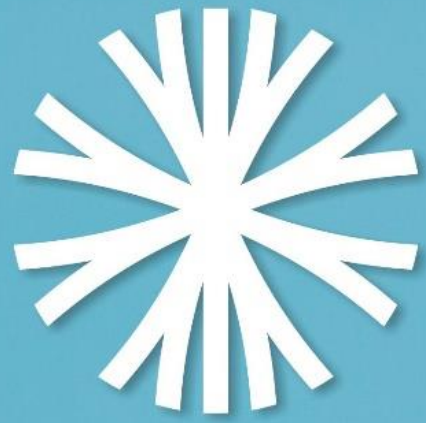
Shopping, art craft
Galleries



TERRA UNO

DESARROLLOS

With a history of over 25 years, TERRA UNO is a recognized Mexican company backed up by a portfolio of properties developed in Puerto Vallarta and Riviera Nayarit, all characterized by its privileged location, construction quality, and intelligent design.



PAVILION

BUCERIAS



WhatsApp Contact
+52 (322) 116 9730

Plaza Los Amores, local 11
Av. Héroe de Nacozari # 25
Blvrd. Riviera Nayarit esq. Av. Las Palmas
C.P. 63732 Bucerías, Nayarit
+52 (329) 688 1842

sales@pavilionbucerias.com

www.pavilionbucerias.com



ELENGORN REALTORS
VALLARTA • NAYARIT



TERRA UNO
DESARROLLOS