



OLYMPIA

The Pinnacle of Distinction

OLYMPIA is an exclusive residential project that fuses the dynamism of modern life with contemporary luxury, located in a central area in transformation with easy access to all services.



The developer reserves the right to modify colors, materials, services, plans, prices and terms at any time without prior notice.

Exclusivity, Dynamism and Contemporary Luxury



The developer reserves the right to modify colors, materials, services, plans, prices and terms at any time without prior notice.



IC_ESTUDIO

IC Estudio

IC Estudio, responsible for the architectural design of OLYMPIA, is led by its founder, architect Ignacio Gómez, a native of Puerto Vallarta and graduate of the Tecnológico de Monterrey. His approach is distinguished by combining innovative functionality with an aesthetic that harmoniously adapts to the environment, maximizing the efficiency of each space.



DECO Designers

In 2009, Cheko Pérez and Marce Gallo founded DECO Designers with the vision of creating functional and timeless spaces, adapted to a variety of styles. Their residential design unites function and style, integrating space, aesthetics, and technology in collaboration with the owners.

LOCATION


 300 meters - Agustín Flores Contreras Municipal Stadium

 800 meters - Soriana Híper

 900 meters - Beach Access

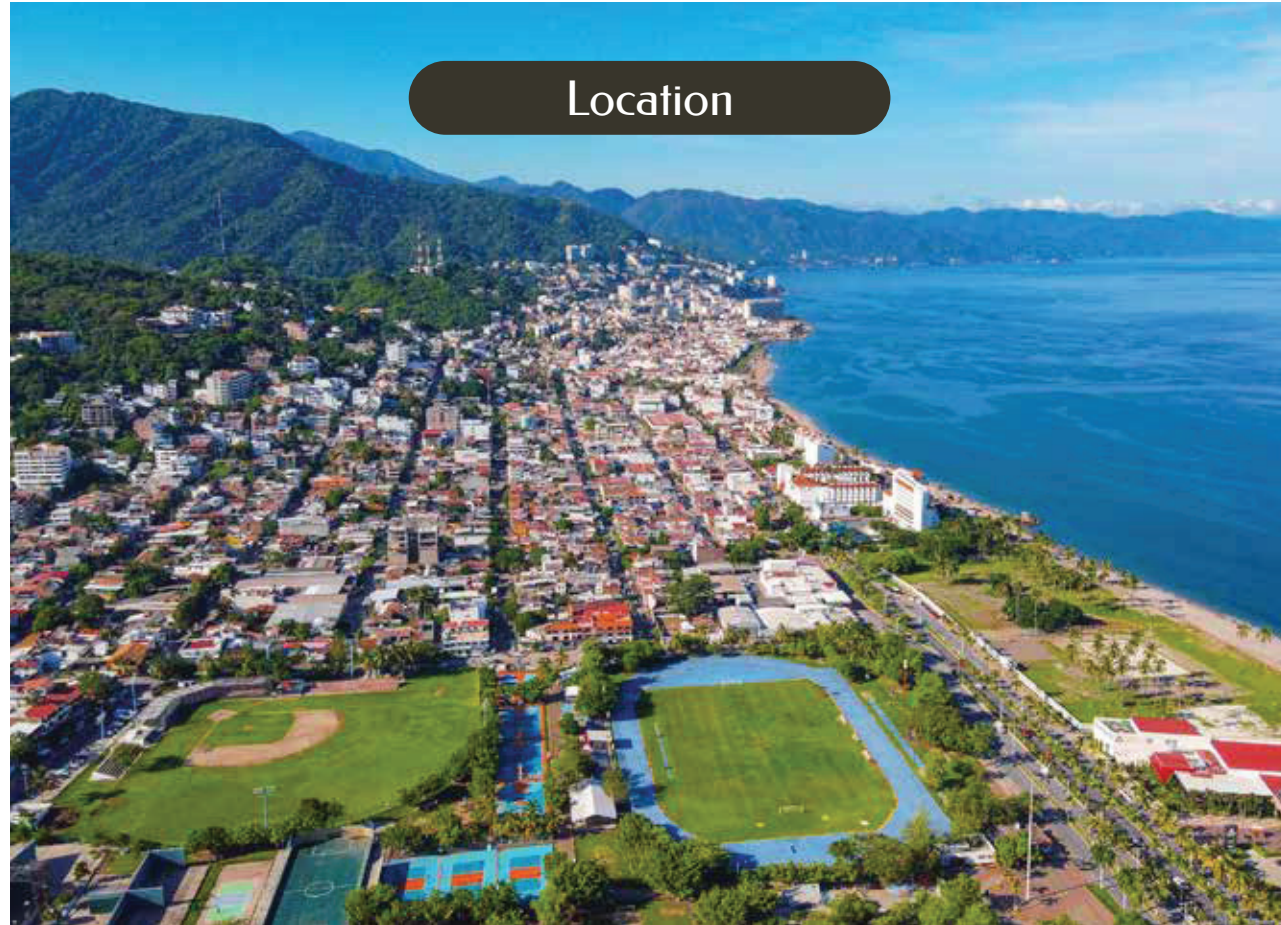
 1.1 km - El Barracuda Restaurant

 1.6 km - Boardwalk

 3.2 km - Romantic Zone



Key Points



Located in the Lázaro Cárdenas neighborhood, minutes from the best of Vallarta: Zona Romántica, beaches, recreational centers and steps from the Municipal Stadium.



Enjoy the pool, gym, sauna and more amenities for your well-being in exclusive areas where luxury and comfort create a unique experience.



The contemporary design of the units provides a feeling of simplicity and elegance, while their large windows allow natural light to flow freely.

INVESTMENT

OLYMPIA offers certainty and security to investors, backed by the solid alliance between ELEMENT DESARROLLOS CREATIVOS and GOVA, guaranteeing high added value with innovation and quality that ensures sustained growth in investment.

ELEMENT
Desarrollos Creativos

GOVA

The developer reserves the right to modify colors, materials, services, plans, prices and terms at any time without prior notice.



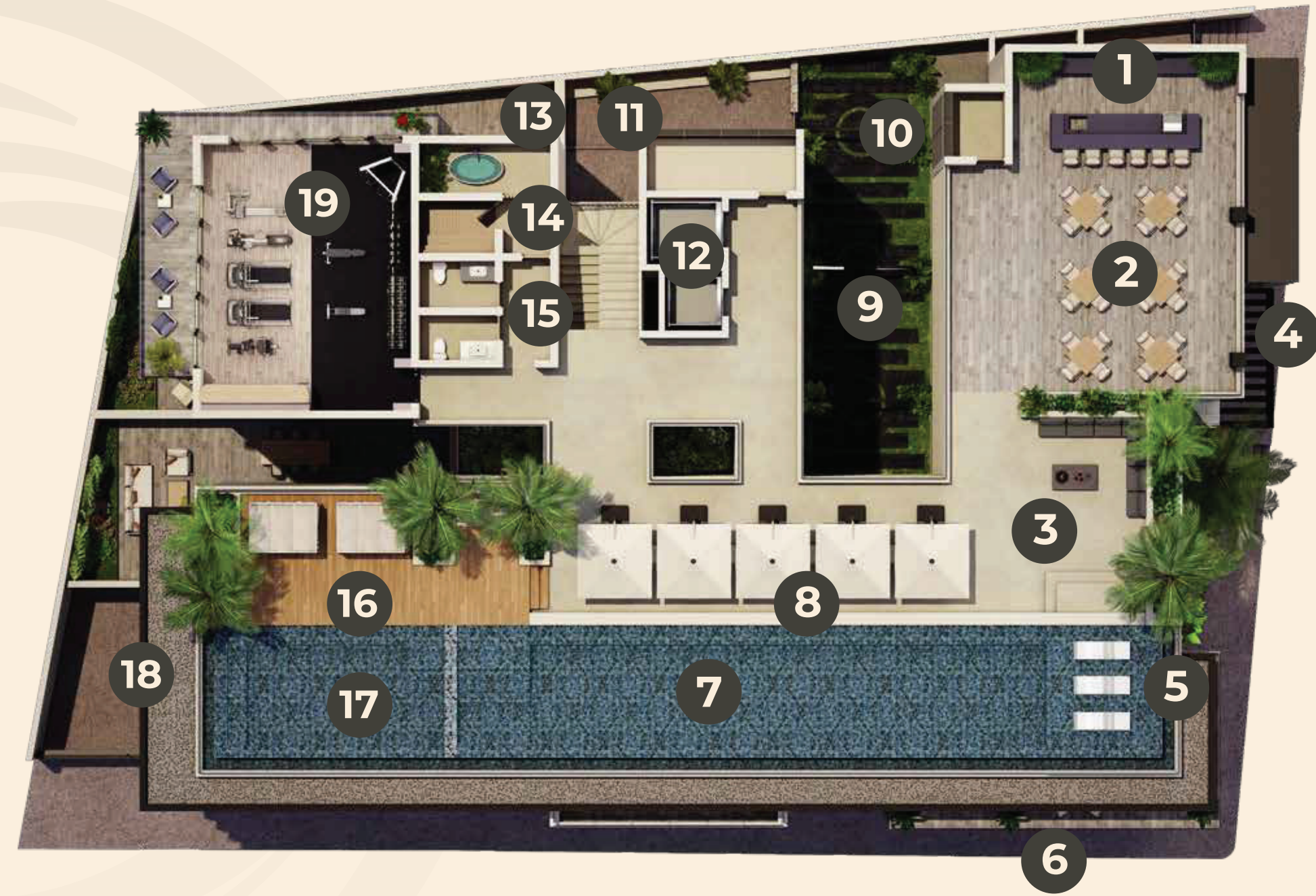
General Information

- ✓ 40 UNITS
- ✓ 17 PARKING SPACES
- ✓ 24 STORAGE ROOMS
- ✓ COMMERCIAL AREA
- ✓ 24/7 SECURITY SYSTEM
- ✓ CONCIERGE



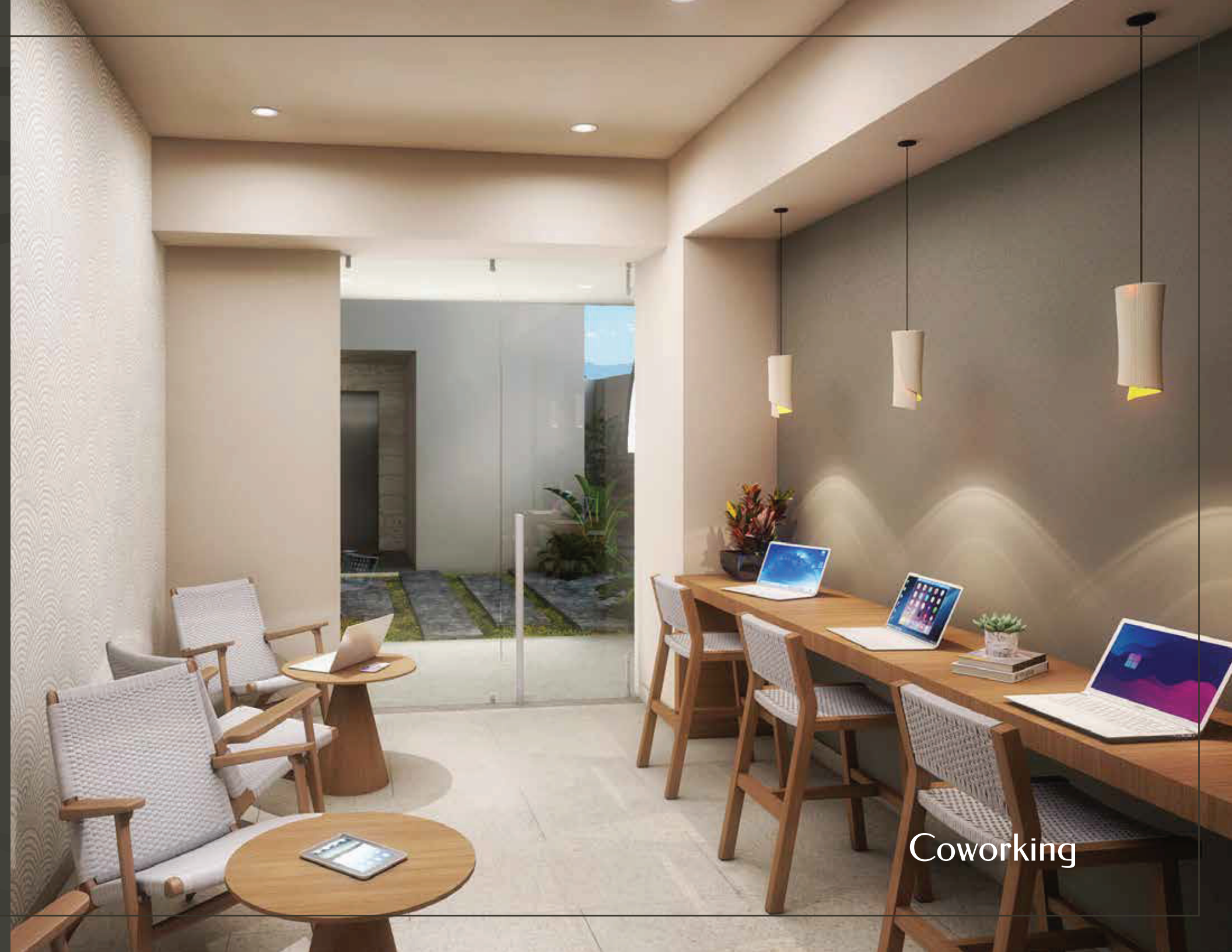
AMENITIES

- 1 BBQ Area
- 2 Sport Bar
- 3 Fire Pit
- 4 Lobby
- 5 Tanning Area
- 6 Commercial Area
- 7 Infinity Pool
- 8 Pool Lounge Chairs
- 9 Central Garden
- 10 Coworking
- 11 Pet Washing
- 12 Elevators
- 13 Ice Bath
- 14 Infrared Sauna
- 15 Restrooms
- 16 Daybeds
- 17 Jacuzzi
- 18 Parking
- 19 Gym



The developer reserves the right to modify colors, materials, services, plans, prices and terms at any time without prior notice.

Lobby



Coworking

Central Garden



Art and style in every photograph



Central Garden



Pet Washing



Share and enjoy your (own) way

Sport Bar

Fire pit



Sauna and Ice Bath



Infinity Pool



Endless views, unparalleled moments

Jacuzzi - Daybeds



Relax in a space designed for you

YOUR ONLY LIMIT IS YOU

Create your best version in every session

Air Conditioning Gym





Interiors





Interiors

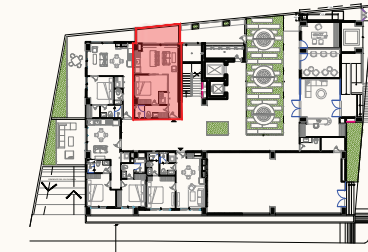


Details that make a difference




TYPE A

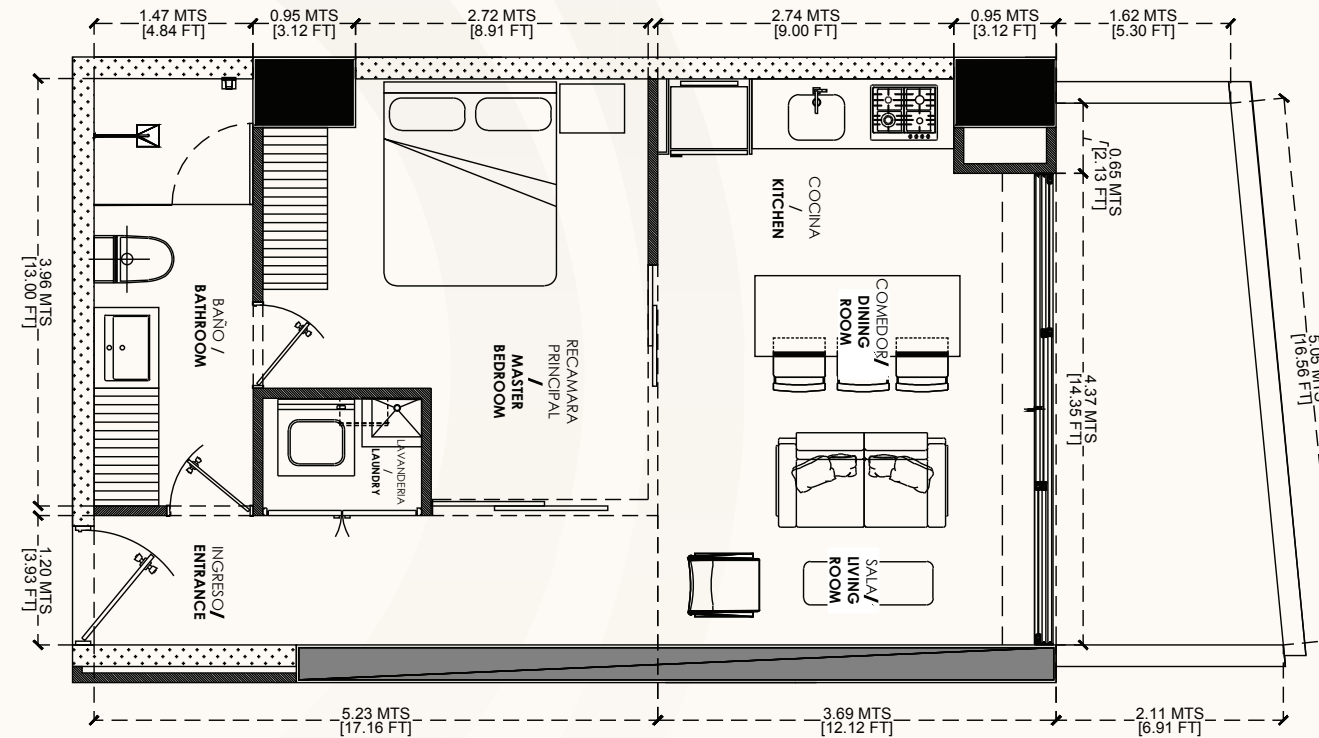
UNIT 101

1 BEDROOM | 1 BATHROOM



-  1 Bedroom
-  1 Bathroom
-  Kitchen

-  Living room
-  Laundry Room
-  Terrace



INTERIOR:
52.03 M² / 560.04 FT²

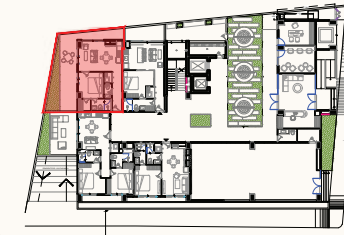
TERRACE:
11 M² / 118.40 FT²







TOTAL:
63.03 M² / 678.44 FT²

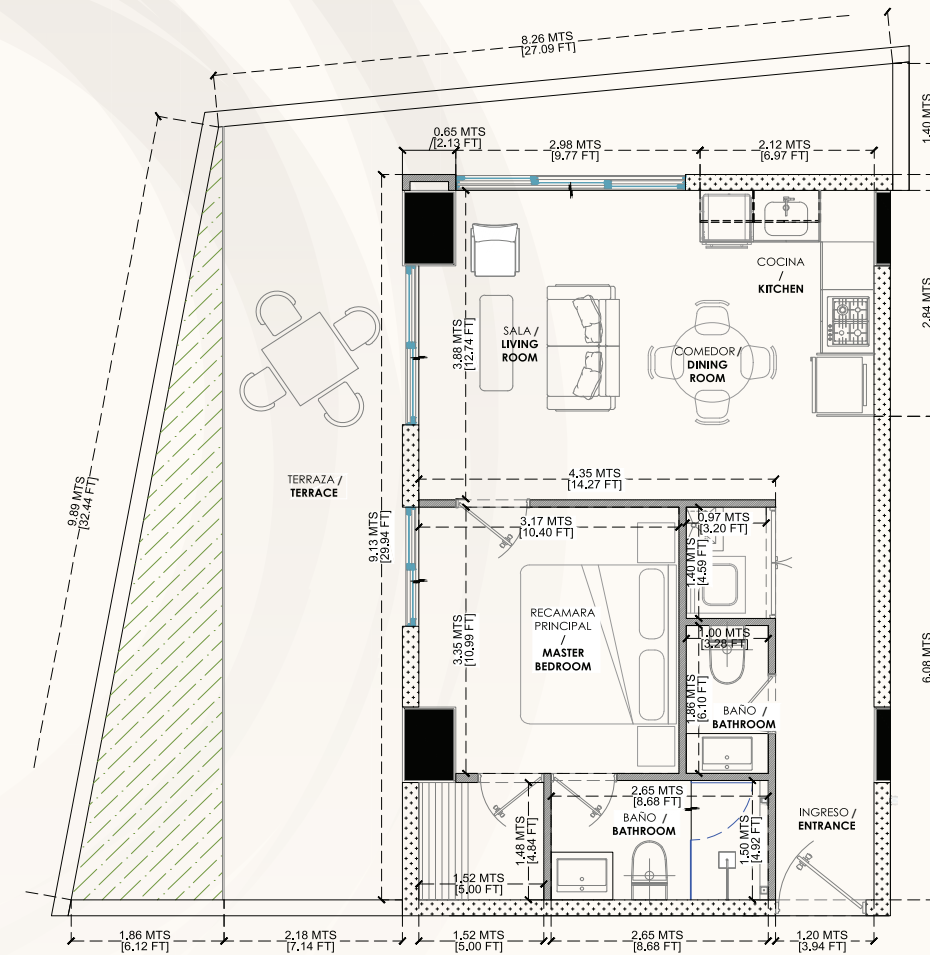
TYPE B

UNIT 102

1 BEDROOM | 1.5 BATHROOMS



-  1 Bedroom
-  1.5 Bathrooms
-  Kitchen
-  Living room
-  Laundry Room
-  Terrace



INTERIOR:
54.19 M² / 583.29 FT²

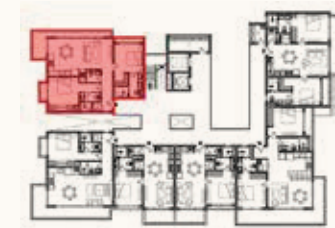
TERRACE:
41.63 M² / 448.10 FT²

TOTAL:
95.82 M² / 1,031.39 FT²

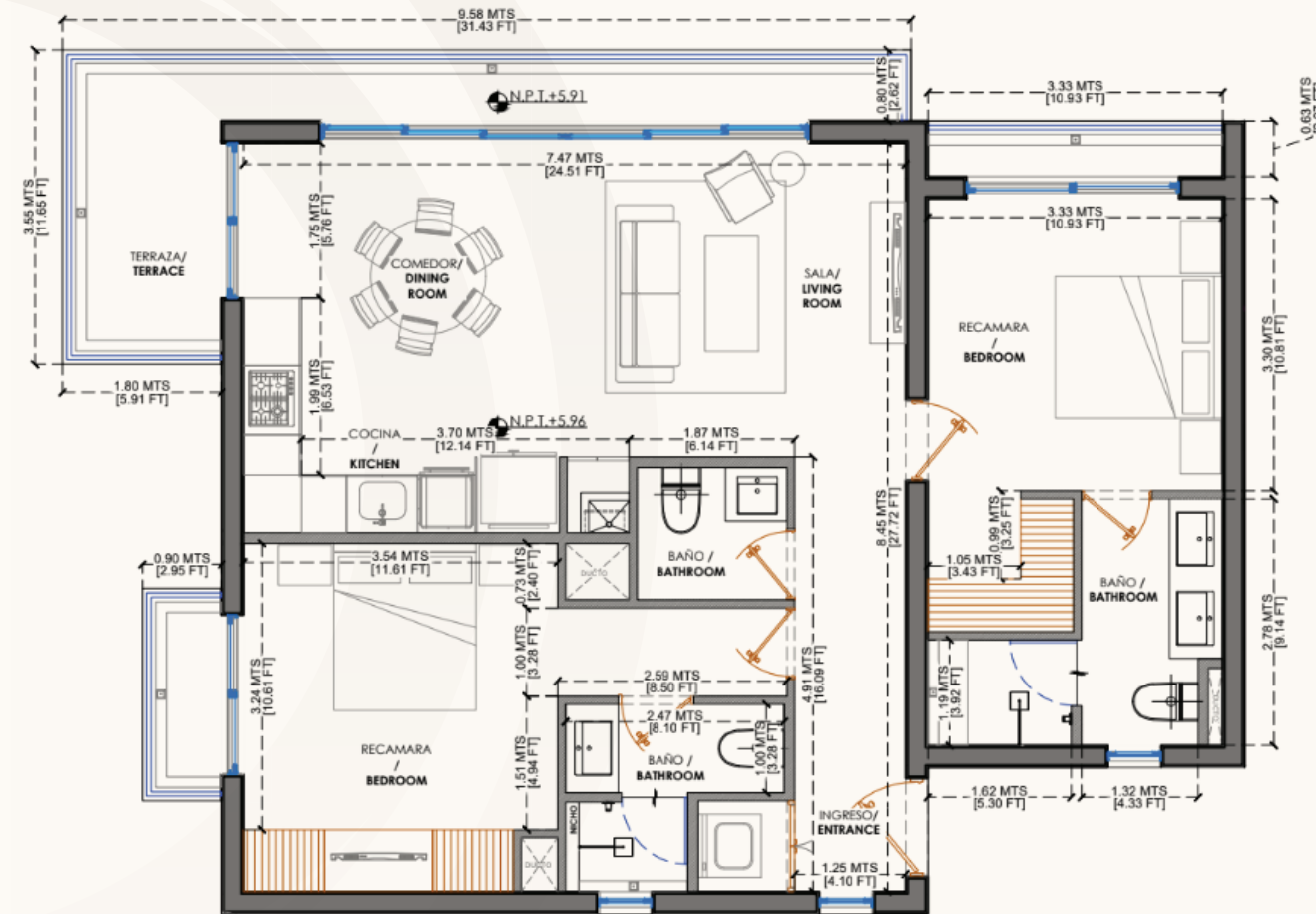
TYPE C

UNITS 201, 301, 401, 501, 601, 701

2 BEDROOMS | 2.5 BATHROOMS



-  2 Bedrooms
-  2.5 Bathrooms
-  Kitchen
-  Living room
-  Laundry Room
-  Terrace



INTERIOR:
95.20 M² / 1024.72 Ft²

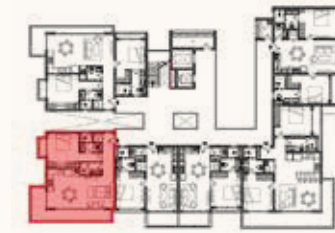
TERRACE:
17.02 M² / 183.20 Ft²







TOTAL:
112,22 M² / 1.207,92 Ft²

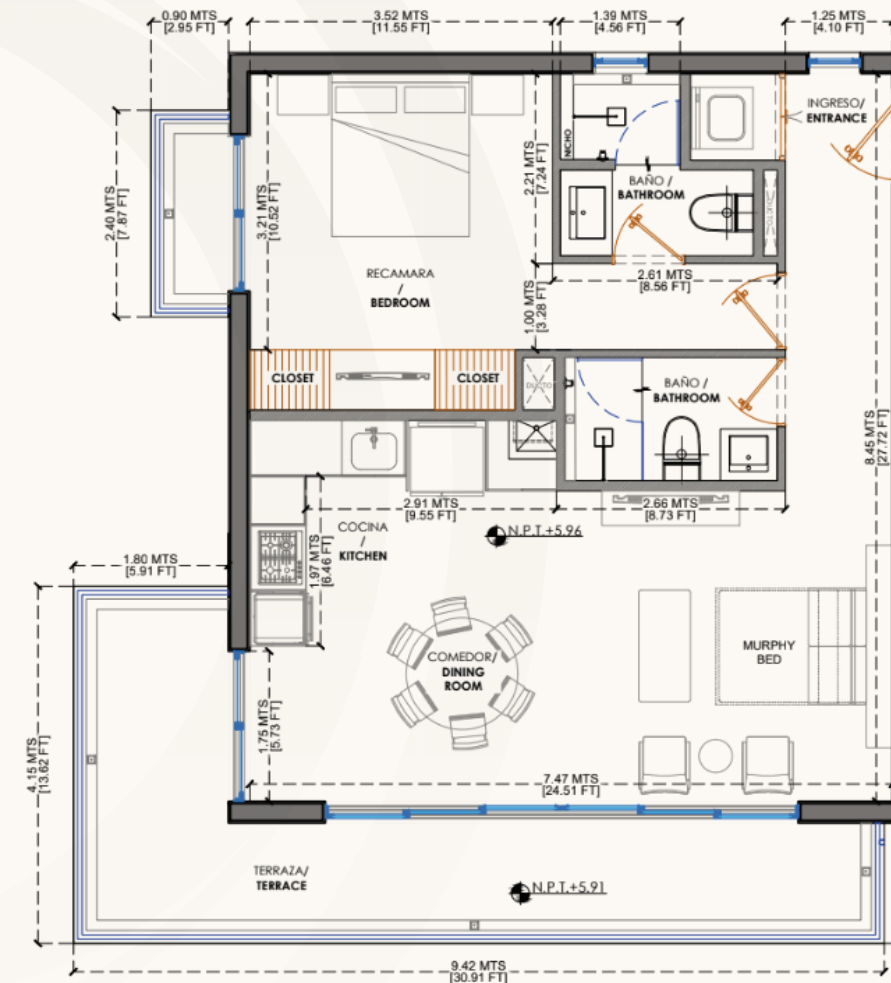
TYPE D

UNITS 202, 302, 402, 502

1 BEDROOM | 2 BATHROOMS



-  1 Bedroom
-  Living room
-  2 Bathrooms
-  Laundry Room
-  Kitchen
-  Terrace



INTERIOR:
70.41 M² / 757.88 Ft²

TERRACE:
20.29 M² / 218.39 Ft²

TOTAL:
90.70 M² / 976.28 Ft²

The developer reserves the right to modify colors, materials, services, plans, prices and terms at any time without prior notice.




TYPE E

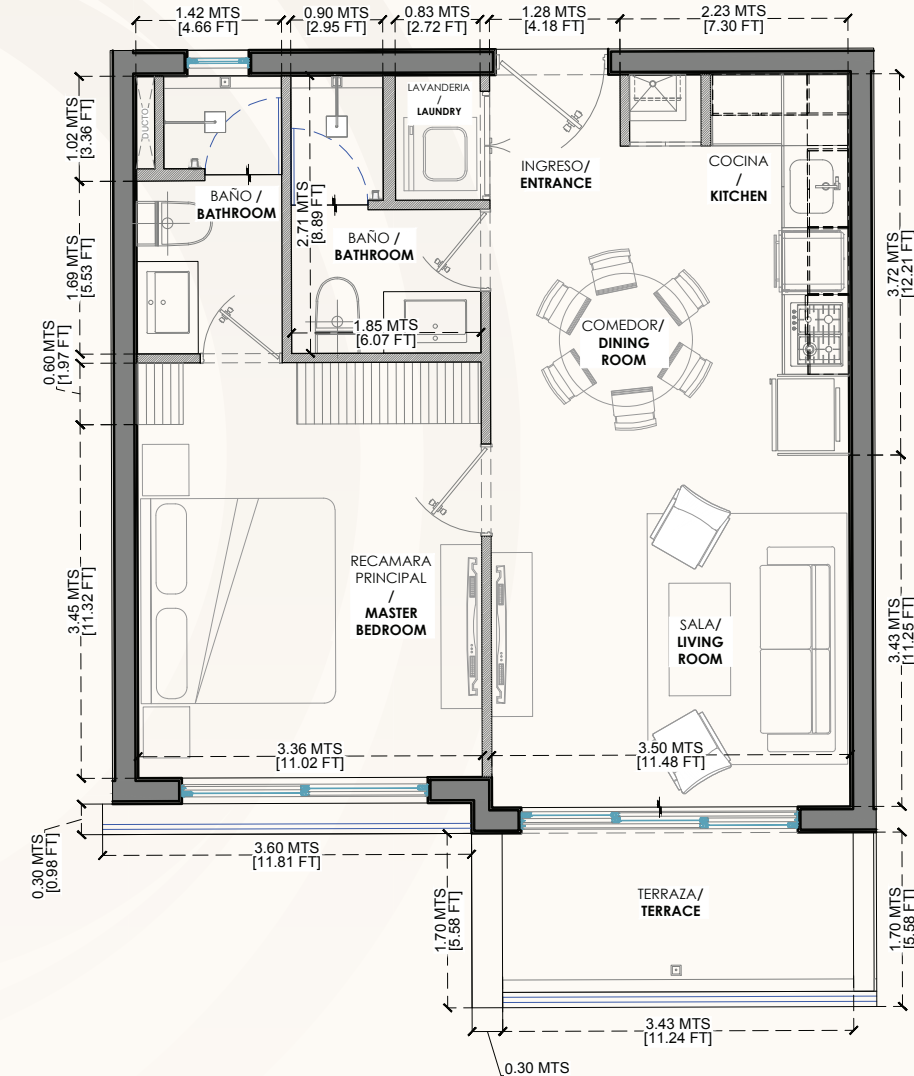
UNITS 203, 303, 403, 503

1 BEDROOM | 2 BATHROOMS



-  1 Bedroom
-  2 Bathrooms
-  Kitchen

-  Living room
-  Laundry Room
-  Terrace



INTERIOR:
54.06 M² / 581.89 Ft²

TERRACE:
7.55 M² / 81.26 Ft²

TOTAL:
61.61 M² / 663.15 Ft²




TYPE F

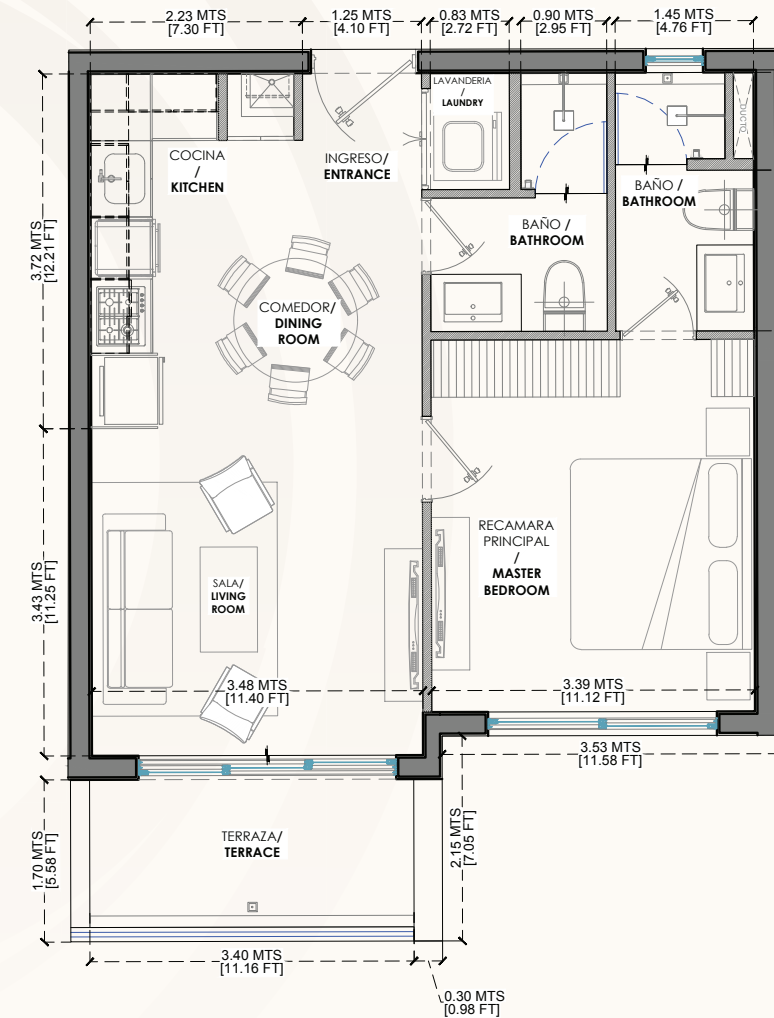
UNITS 204, 304, 404, 504

1 BEDROOM | 2 BATHROOMS



-  1 Bedroom
-  2 Bathrooms
-  Kitchen

-  Living room
-  Laundry Room
-  Terrace



INTERIOR:
53.61 M² / 577.05 Ft²

TERRACE:
5.93 M² / 63.83 Ft²

TOTAL:
59.54 M² / 640.88 Ft²




TYPE G

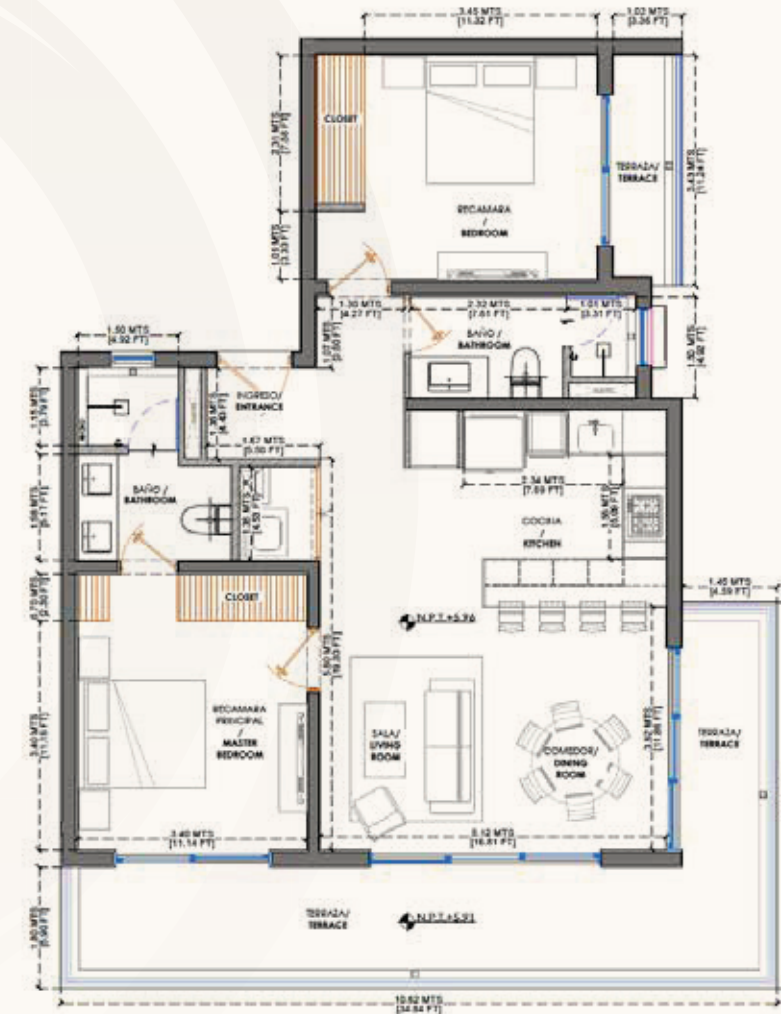
UNITS 405, 505, 605

2 BEDROOMS | 2 BATHROOMS



-  2 Bedrooms
-  2 Bathrooms
-  Kitchen

-  Living room
-  Laundry Room
-  Terrace



INTERIOR:
90.90 M² / 978.43 Ft²

TERRACE:
28.01 M² / 301.49 Ft²

TOTAL:
118.91 M² / 1279.30 Ft²

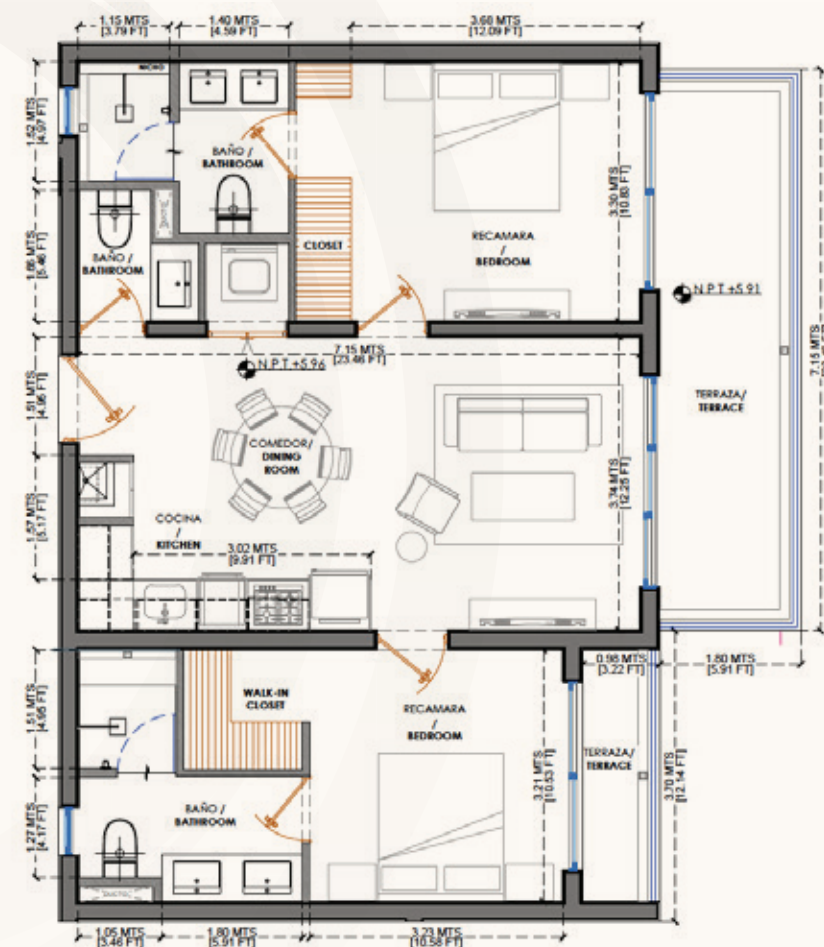
TYPE H

UNITS 406, 506, 606, 706

2 BEDROOMS | 2.5 BATHROOMS



-  2 Bedrooms
-  2.5 Bathrooms
-  Kitchen
-  Living room
-  Laundry Room
-  Terrace



INTERIOR:
81.66 M² / 878.98 Ft²

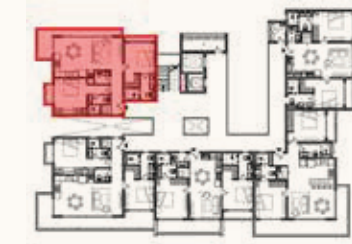
TERRACE:
16.26 M² / 175.02 Ft²







TOTAL:
97.92 M² / 1054.02 Ft²

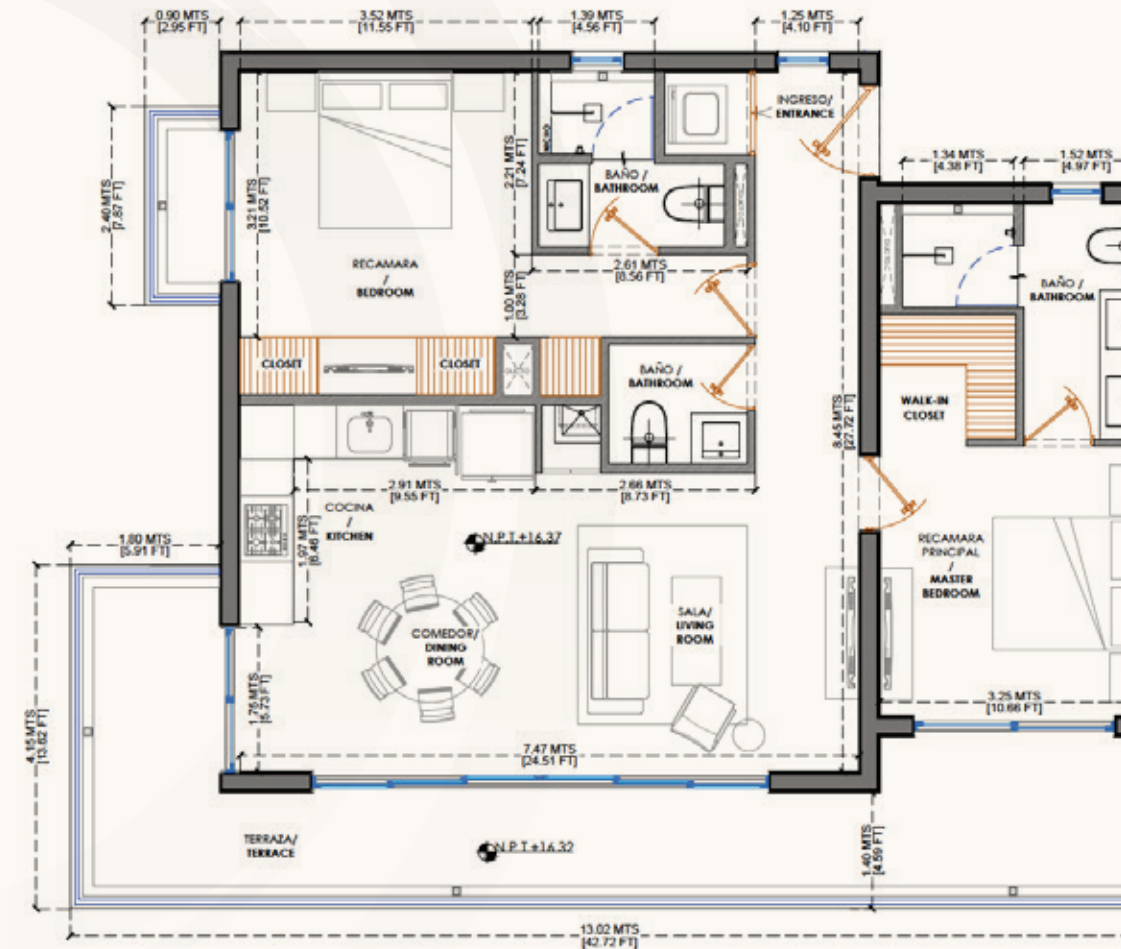
TYPE I

UNITS 602, 702

2 BEDROOMS | 2.5 BATHROOMS



-  2 Bedrooms
-  2.5 Bathrooms
-  Kitchen
-  Living room
-  Laundry Room
-  Terrace



INTERIOR:
93.67 M²/ 1,028.25 Ft²

TERRACE:
27.53 M²/ 296.33 Ft²

TOTAL:
120.20 M²/ 1,304.58 Ft²

TYPE J

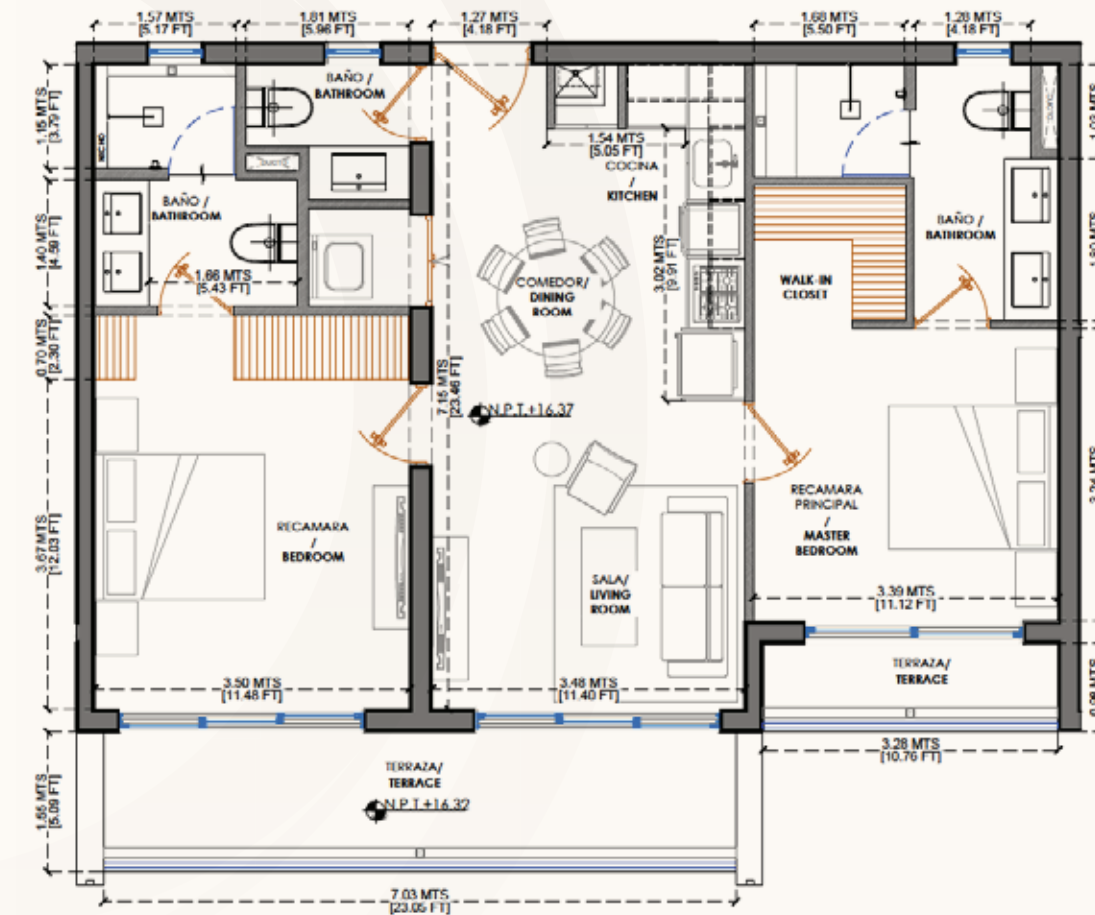
UNITS 604, 704

2 BEDROOMS | 2.5 BATHROOMS



- 2 Bedrooms
- 2.5 Bathrooms
- Kitchen

- Living room
- Laundry Room
- Terrace



INTERIOR:
80.49 M² / 866.38 Ft²

TERRACE:
16.16 M² / 173.94 Ft²

TOTAL:
95.65 M² / 1,040.33 Ft²




TYPE K

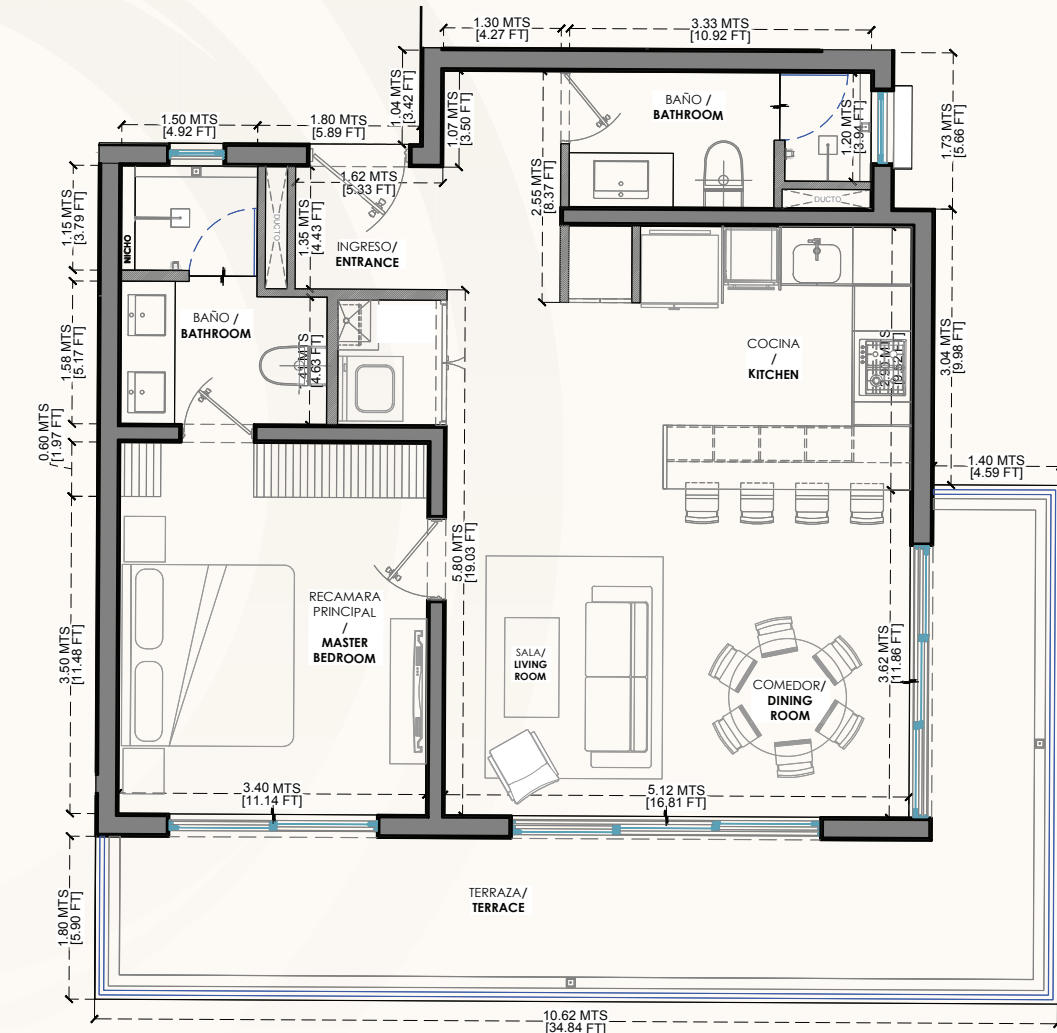
UNITS 205, 305

1 BEDROOM | 2 BATHROOMS



-  1 Bedroom
-  2 Bathrooms
-  Kitchen

-  Living room
-  Laundry Room
-  Terrace



INTERIOR:
74.24 M² / 799.11 Ft²

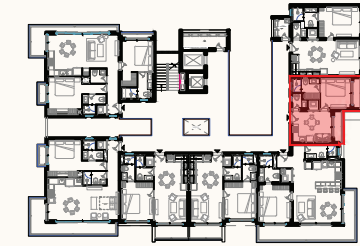
TERRACE:
24.58 M² / 264.57 Ft²

TOTAL:
98.82 M² / 1,063.38 Ft²




TYPE L

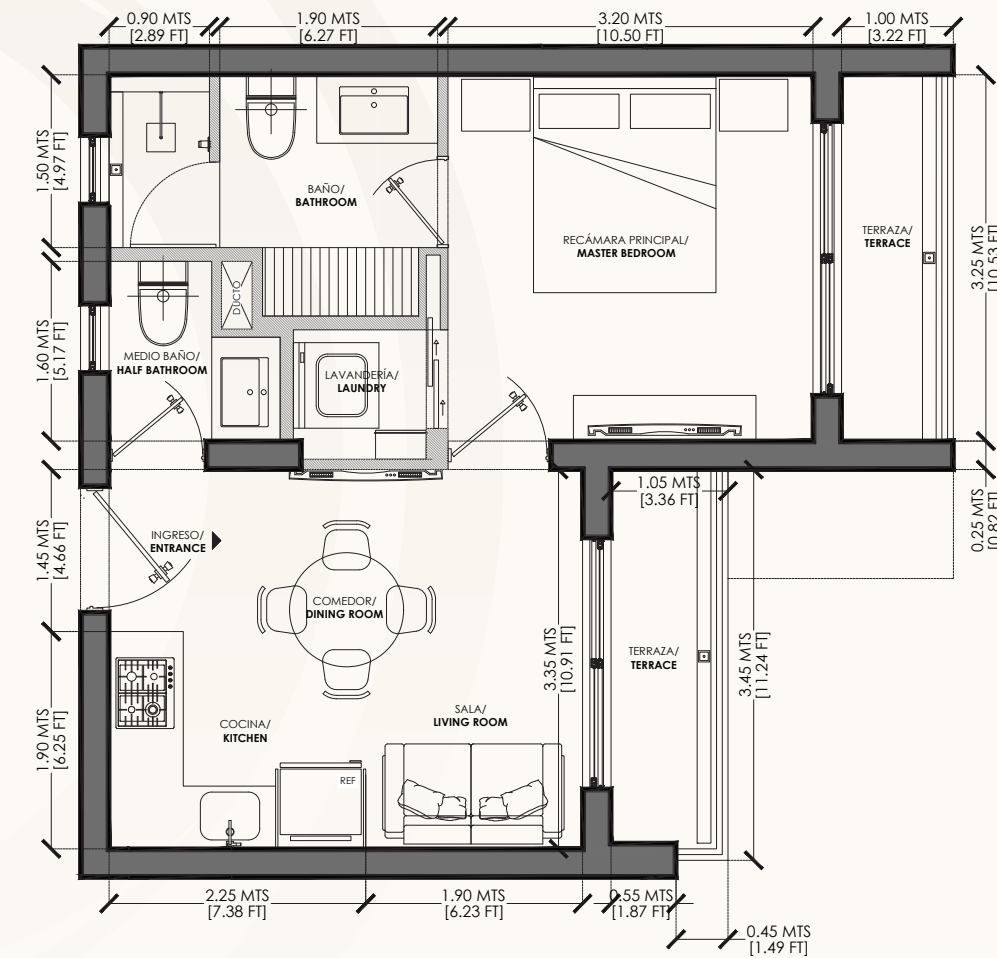
UNITS 206, 306

1 BEDROOM | 1.5 BATHROOMS



-  1 Bedroom
-  1.5 Bathrooms
-  Kitchen

-  Living room
-  Laundry Room
-  Terrace



INTERIOR:
39.95 M² / 430.01 Ft²

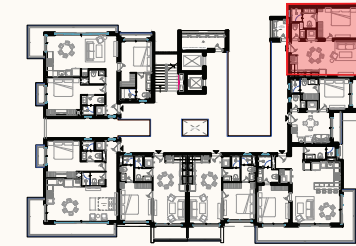
TERRACE:
7.02 M² / 75.56 Ft²







TOTAL:
46.97 M² / 505.58 Ft²

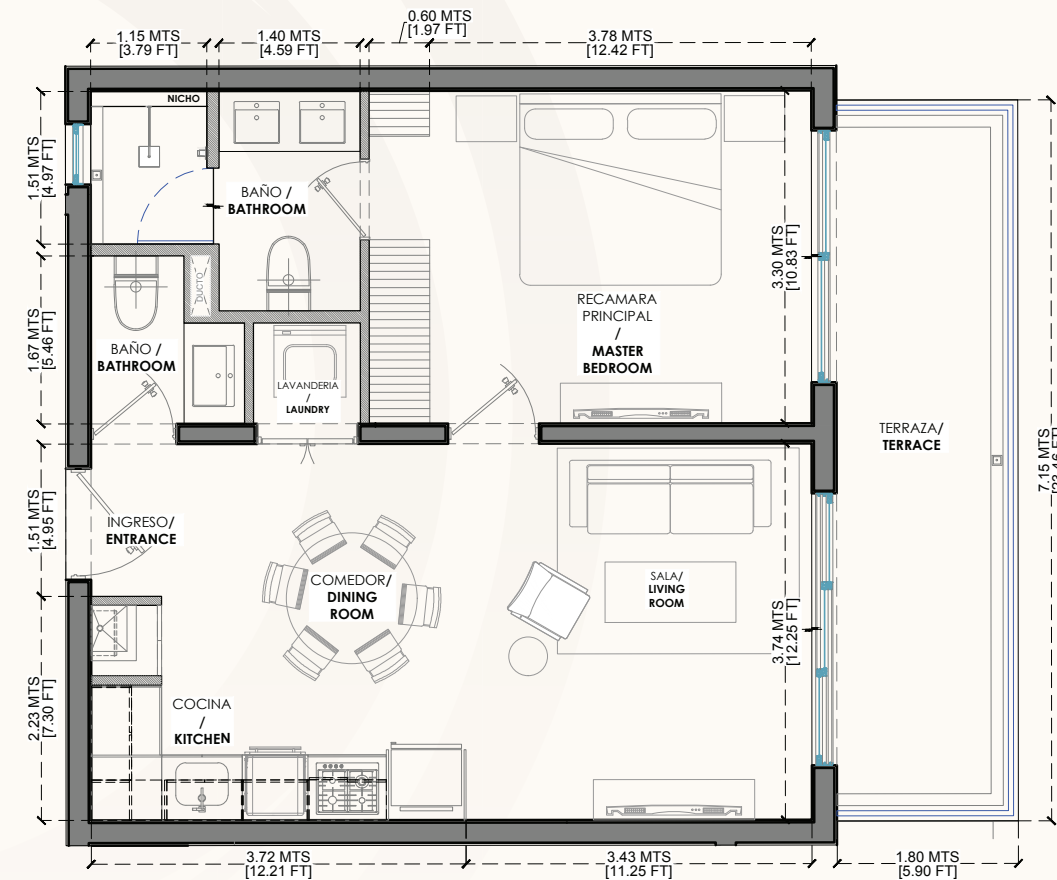
TYPE M

UNITS 207, 307

1 BEDROOM | 1.5 BATHROOMS



-  1 Bedroom
-  1.5 Bathrooms
-  Kitchen
-  Living room
-  Laundry Room
-  Terrace



INTERIOR:
58.22 M² / 626.67 Ft²

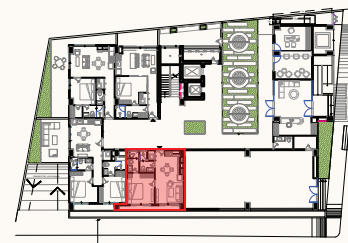
TERRACE:
12.86 M² / 138.42 Ft²

TOTAL:
71.08 M² / 765.09 Ft²

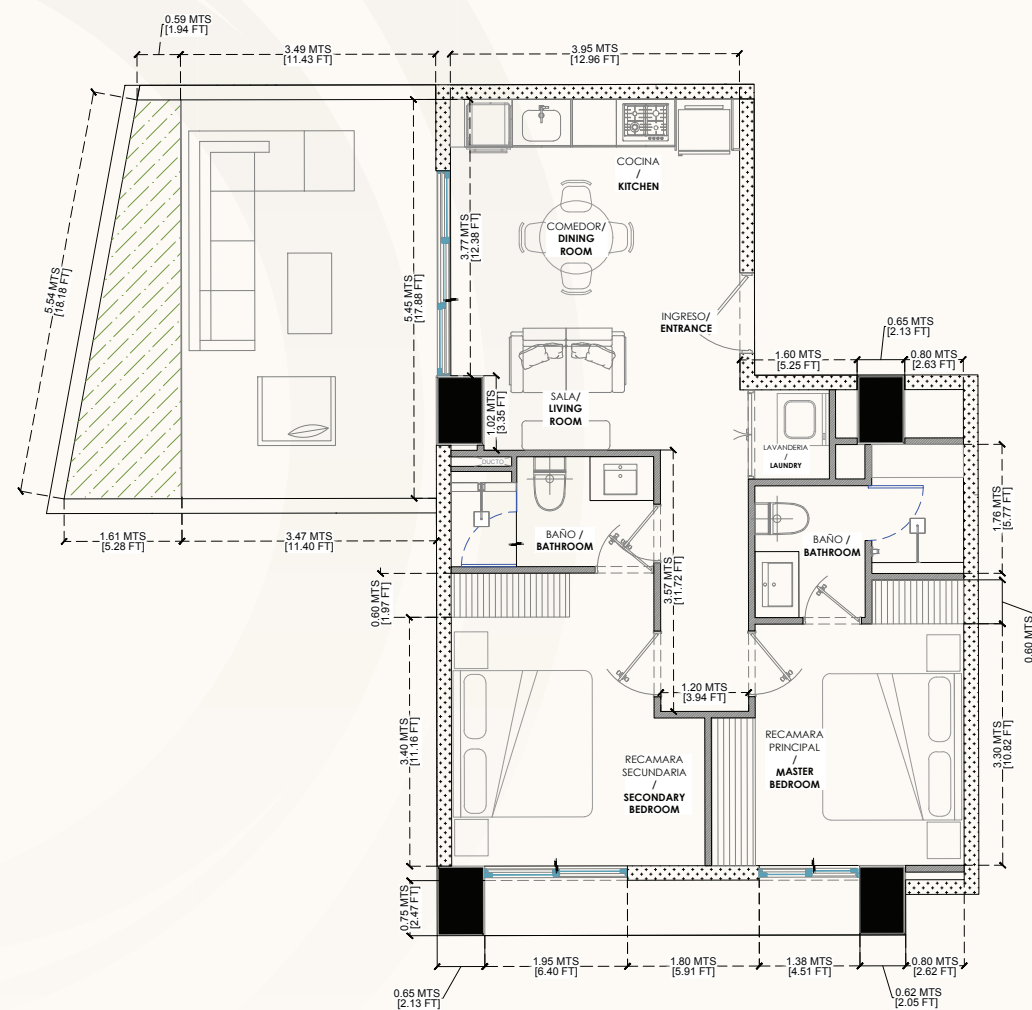
TYPE O

UNIT 104

1 BEDROOM | 2 BATHROOMS



-  1 Bedroom
-  2 Bathrooms
-  Kitchen
-  Living room
-  Laundry Room
-  Terrace



INTERIOR:
51.1 M² / 626.67 Ft²

TERRACE:
4.65 M² / 50.05 Ft²

TOTAL:
55.75 M² / 600.08 Ft²

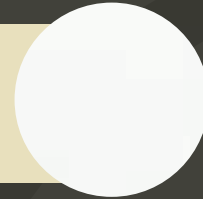
Finishes

Kitchens

Upper and lower cabinets with American oak woodwork or similar



White Quartz countertop or similar.



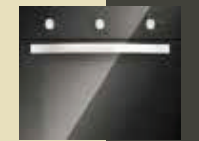
Stainless steel and/or similar gas grill.



Stainless steel and/or similar hood.



Built-in gas oven and/or similar.



Undermount sink made of stainless steel or similar.



Bathrooms

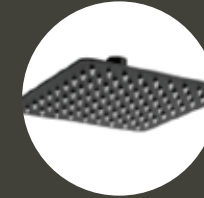
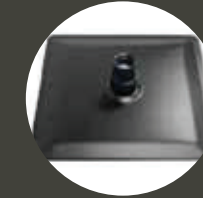
Kiel Sand 60 x 120 cm porcelain cement or similar.



White Quartz or similar countertops.



Gun metal color accessories.



Shower wall and floor: Milena rectified ceramic marble 30 x 60 cm or similar



Mirrors in bathrooms included.

Air Conditioning

The living room and bedrooms have inverter-type air conditioning and ceiling fans for added comfort.

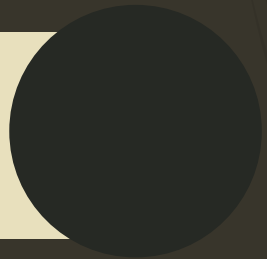
Carpentry

Bathroom vanities, closets, and doors with American oak woodwork or similar



Windows

PVC windows in Ceylon color in all units.



Finishes

Kiel Sand floor 60 x 120 cm or similar for units, the entire open area of the rooftop



Gym Area

Oak imitation wood floor or similar



Terrace of the Units

Calajan porcelain wood floor 20 x 1.20m or similar

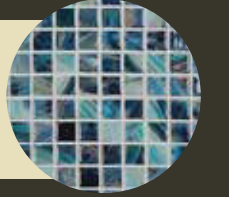


Pool

Pool deck and/or similar.



Nature Royal pool Venetian.



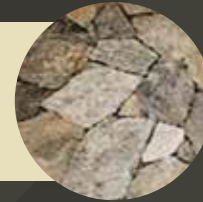
Smart Home

Sport Bar

Calajan wood porcelain floor, rectified porcelain 20 x 120 cm and/or similar.



Flagstone or similar.



Central Garden

Stamped cement floor.



Facade

Travertine marble stone on the facade.



Lobby

Kiel Sand floor 60 x 120 cm or similar in the lobby area.



Exotic stone on the lobby wall.



ECHO SHOW 8

Smart display with Alexa.

8" touch screen. Allows you to make video calls.

Allows you to create scenes and automate turning lights on and off.



Lighting

Smart lighting switch. Allows you to control the lighting by voice or from an application. Allows you to create scenes and automate the turning on and off of the lights.



Security system in common areas

HD 1080p, waterproof, night vision, compatible with Alexa, two-way audio. Rechargeable battery with 3 months of life.



Smart lock

5 opening methods. Fingerprint, password, physical key, proximity card and from the app remotely.



OLYMPIA

A project by:

ELEMENT
Desarrollos Creativos

 **GOVA**

