



GRANDES LAGOS

Living

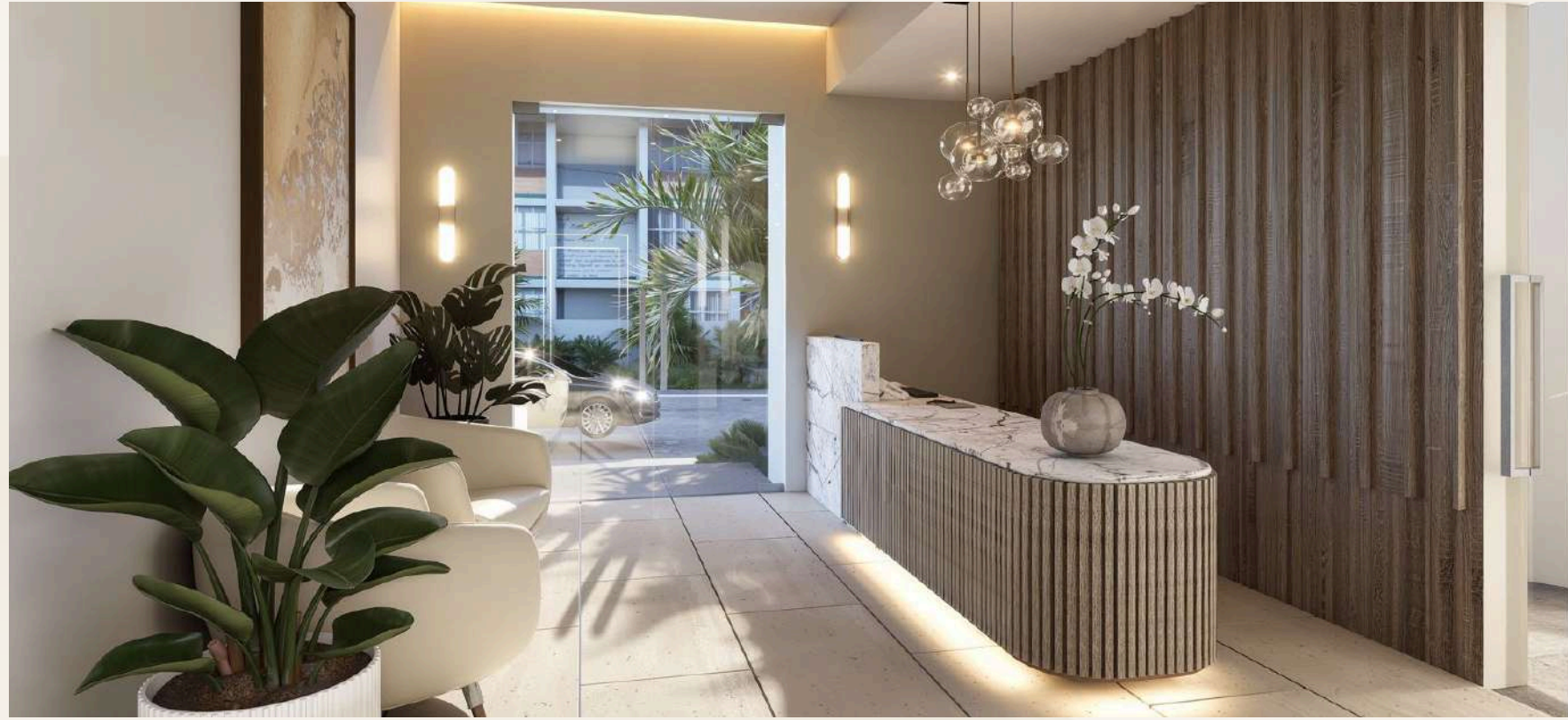


Grandes Lagos is a development designed for those seeking balance between location, architecture, and well-being. A space where living or working flows naturally.

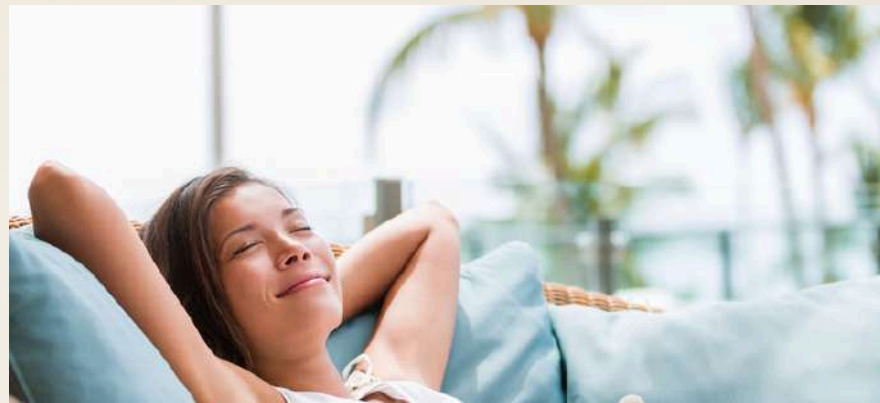
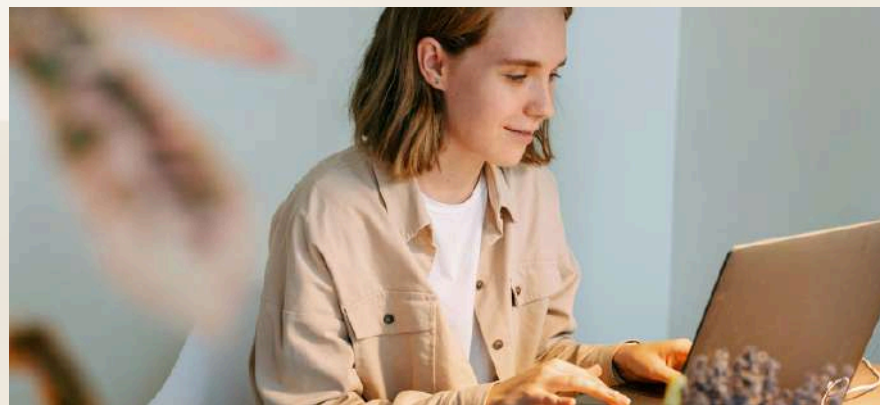
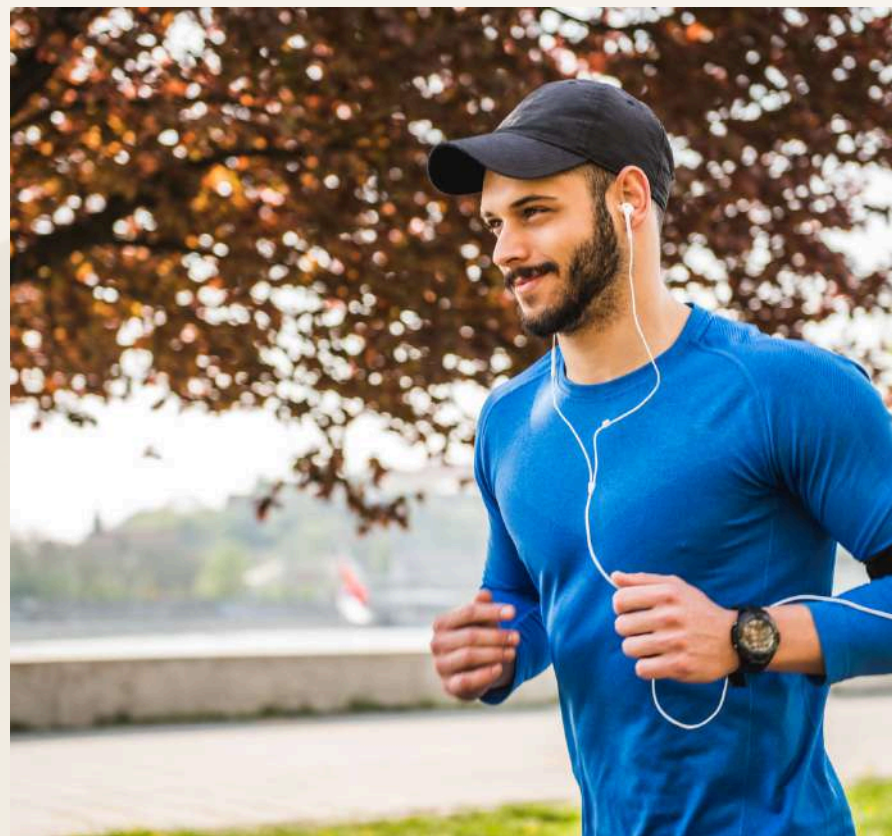
A space thoughtfully
created *for you.*

- 7 levels
- 9 apartments
- 18 offices
- Rooftop pool
- Parking
- Storage





Live. Create. Connect.



Fluvial Vallarta

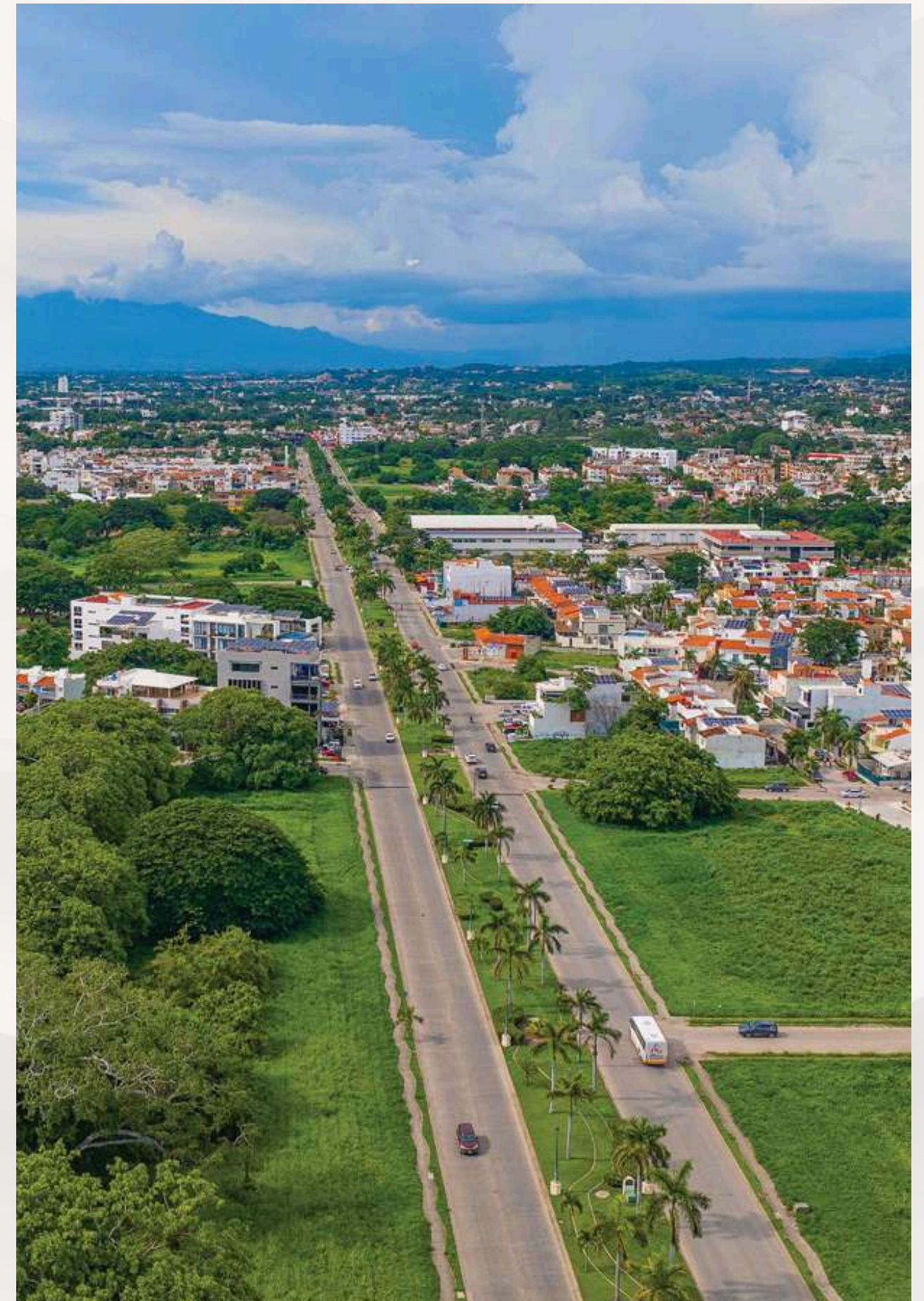
An aerial photograph of the Fluvial Vallarta development in Puerto Vallarta, Mexico. The image shows a mix of modern, multi-story buildings and lower-rise residential structures. A prominent feature is a large, green, landscaped area with a winding path or river. In the background, the city skyline is visible against a backdrop of blue mountains and a clear sky. The overall scene is bright and sunny, with vibrant colors.

Located in one of the best-planned areas of Puerto Vallarta, Fluvial Vallarta offers a contemporary, well-organized, and harmonious environment where urban living is experienced in balance.

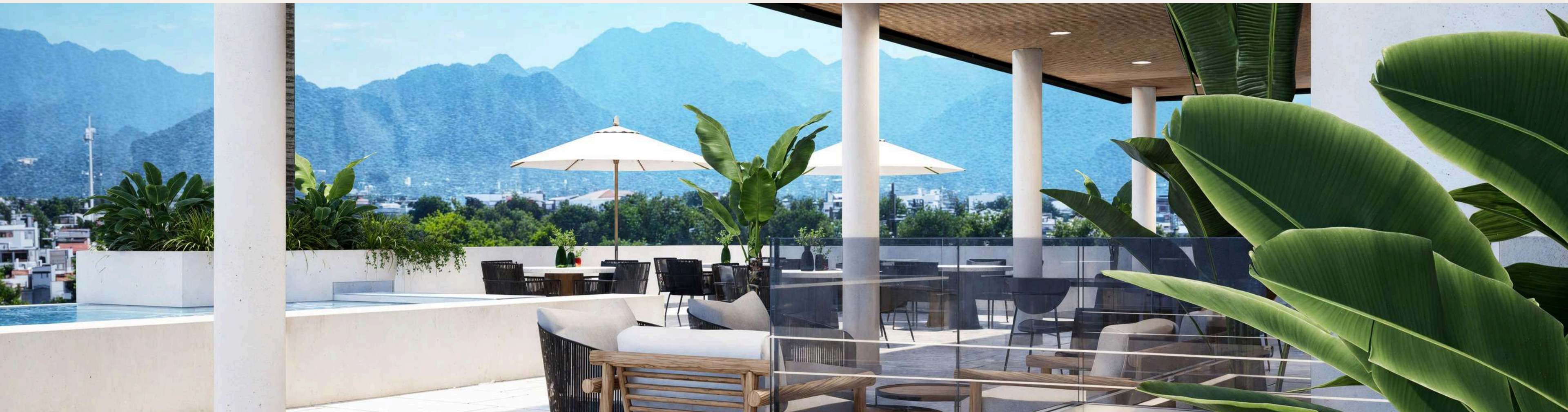
Surrounded by green spaces, select services, and strategic roadways, it is a location that combines well-being, connectivity, and long-term value.

A Truly Privileged *Environment*

- Modern and well-planned urban design.
- Wide streets enhanced with landscaping.
- Services and retail thoughtfully integrated.
- Restaurants, cafés, and gathering spaces just moments away.
- Immediate access to main thoroughfares.
- Close proximity to key areas of the city.
- Established residential community.
- Strong long-term appreciation potential.
- A calm and secure environment.



Amenities



Rooftop



Pool

A space to refresh, unwind, and enjoy the surroundings, surrounded by light, calm, and views that elevate every moment.



Bar & Lounge

An elegant gathering point to enjoy a drink, connect, and end the day in style.



Lounge chairs

Spaces designed for relaxation, where the sun, the breeze, and time itself feel different.



Dining area

An atmosphere designed for sharing, celebrating, and creating memories in an open and welcoming setting.



Rooftop Access Policy

Access to the rooftop and its amenities is exclusive to residential units.

Commercial spaces and office units do not include rooftop access.

Amenities

Pool



Amenities

Lounge chairs



Amenities

Dining area



Amenities

Bar & Lounge



Amenities

Bar & Lounge



Apartments

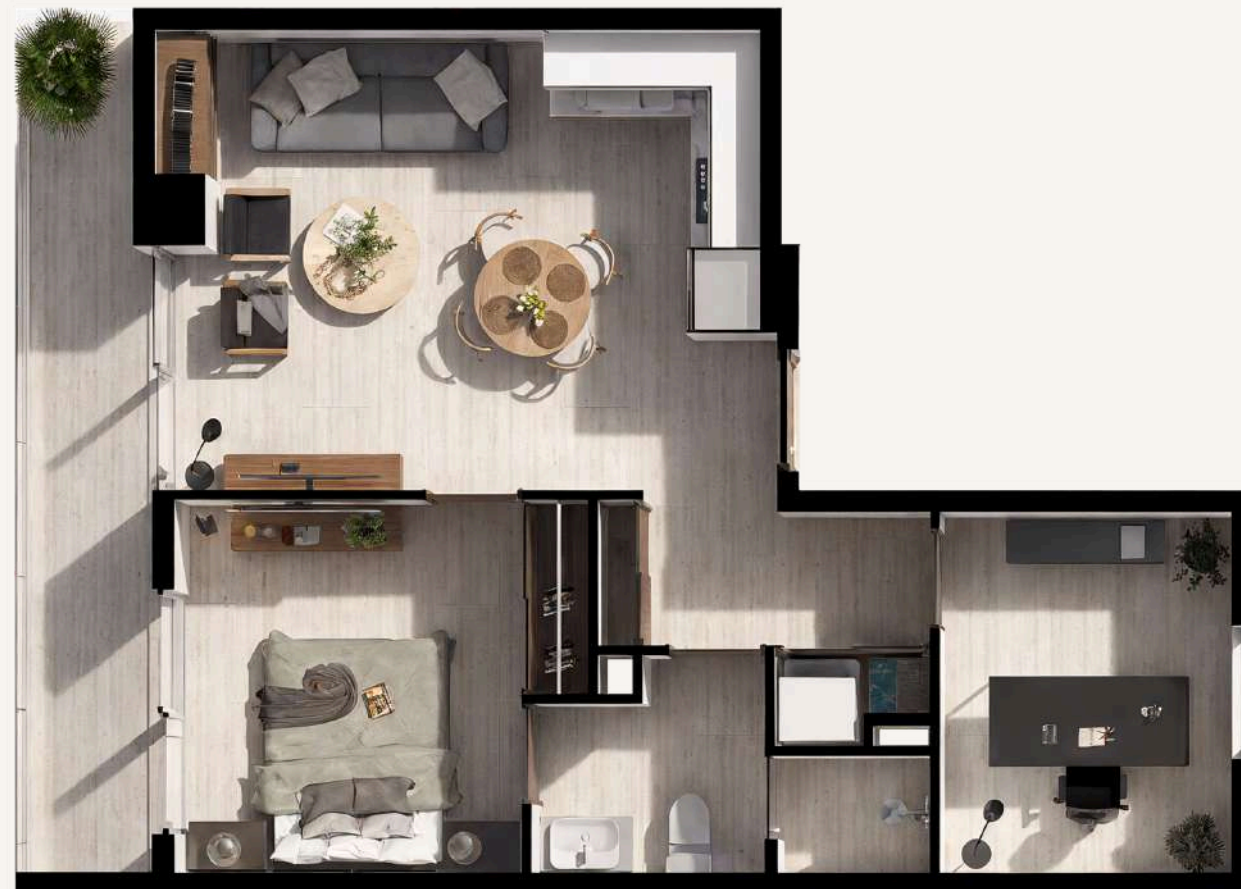
desde los 70.31 m²



Type A

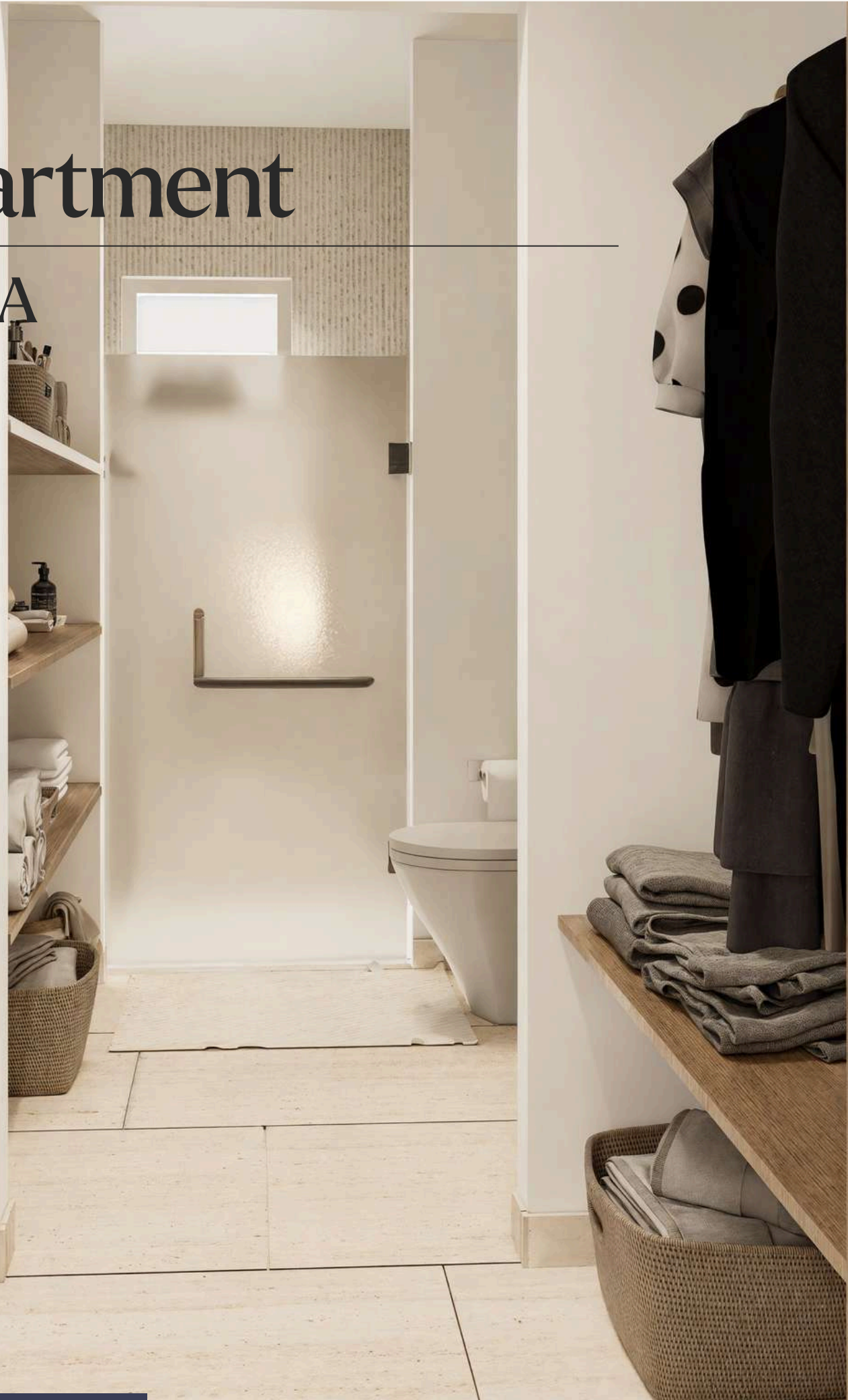
A light-filled, harmonious space where every area flows naturally, and the terrace becomes a refuge to disconnect. Designed for living with calm, comfort, and style.

- | 1 BD + FLEX
- | 70.31 m²
- | KITCHEN
- | 1 FULL BATHROOM
- | DINING AND LIVING ROOM
- | LAUNDRY ROOM



Apartment

Type A



Type B

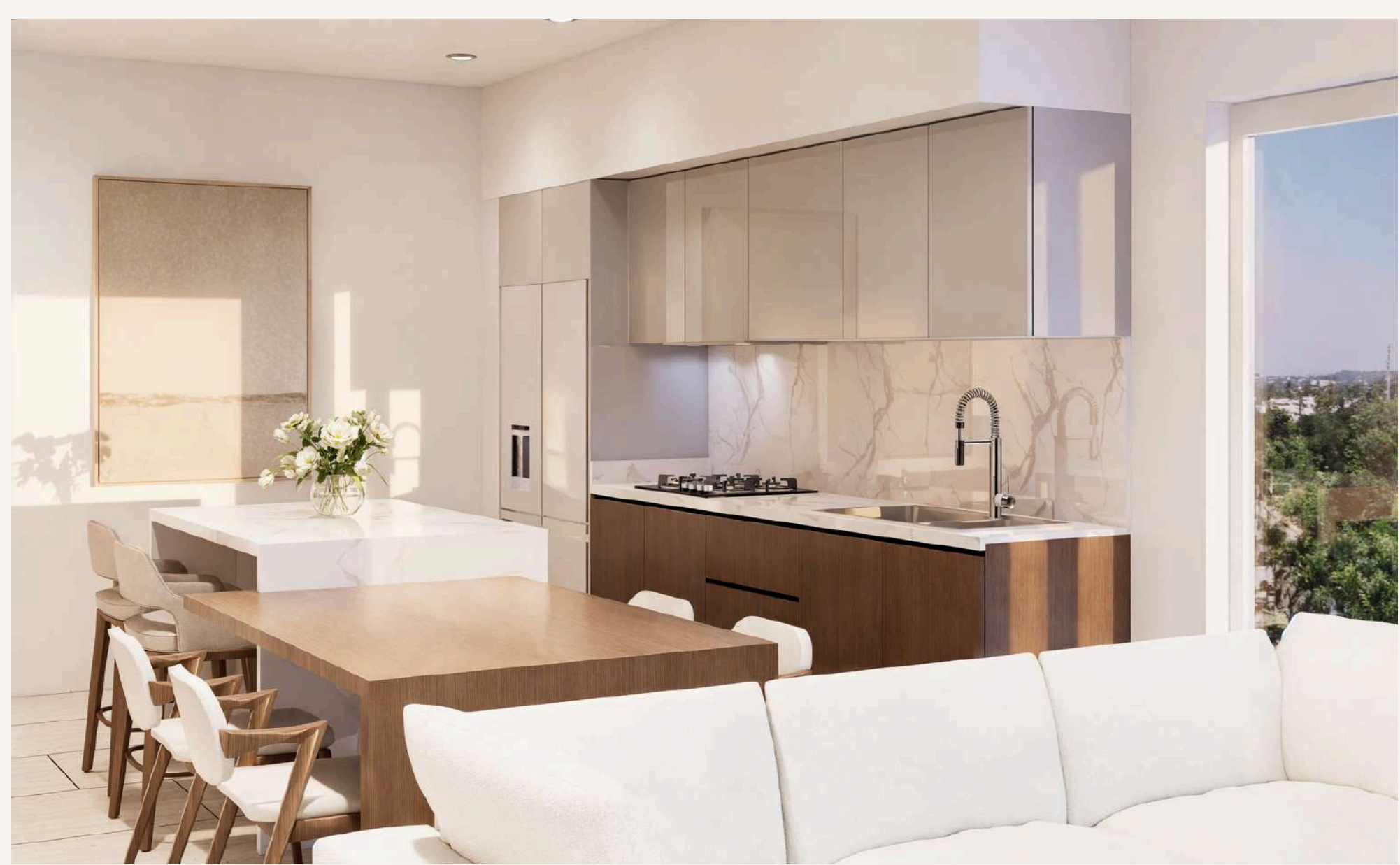
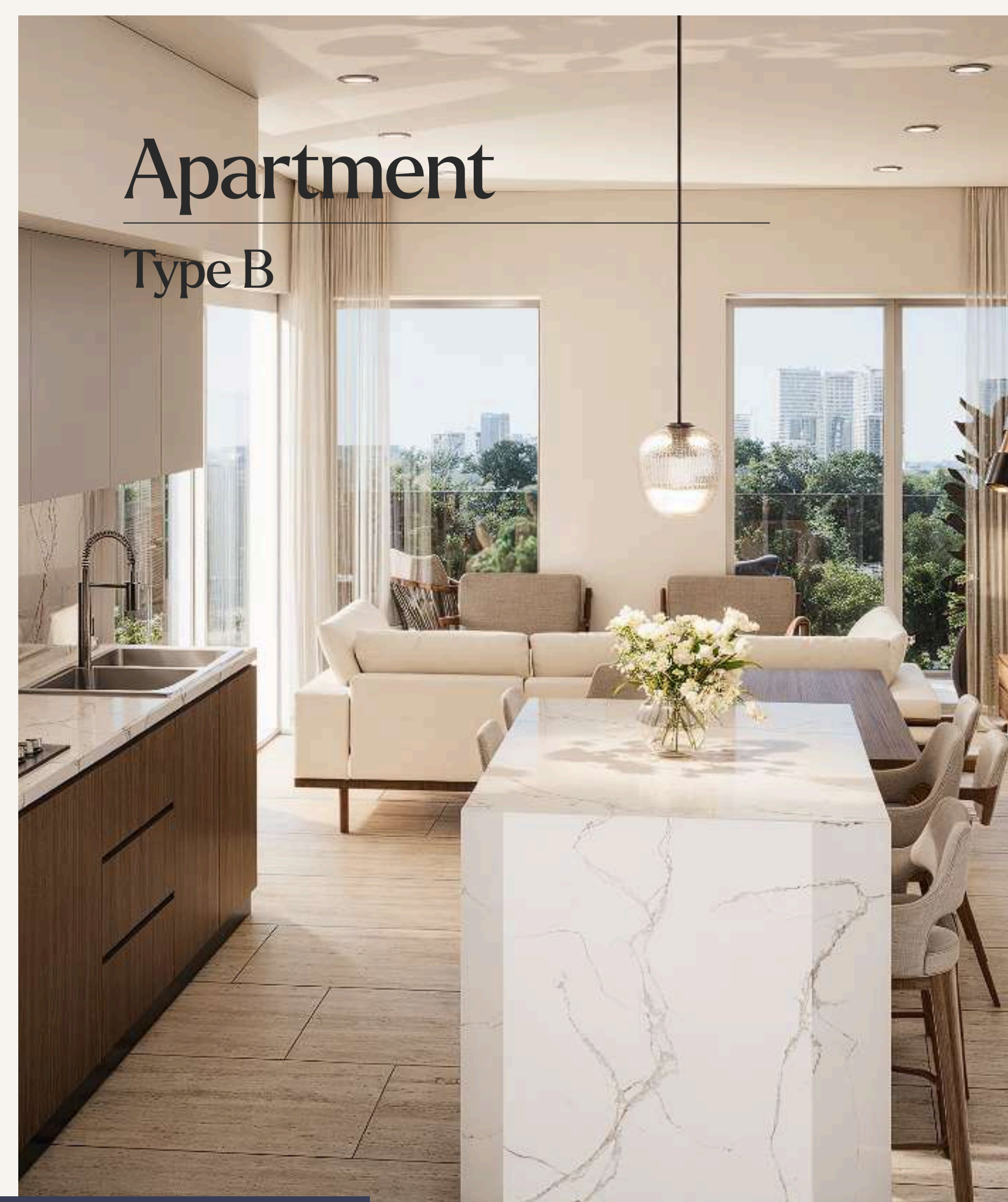
A home where the primary bedroom opens onto a private balcony, creating an intimate corner to breathe, read, or simply savor the moment. Its spaces flow naturally, blending light, comfort, and design in an environment thoughtfully created for living fully.

| 2 BED 2 BATH | LIVING ROOM
| 99.25 m² | DINING ROOM
| KITCHEN | LAUNDRY ROOM



Apartment

Type B



Type C

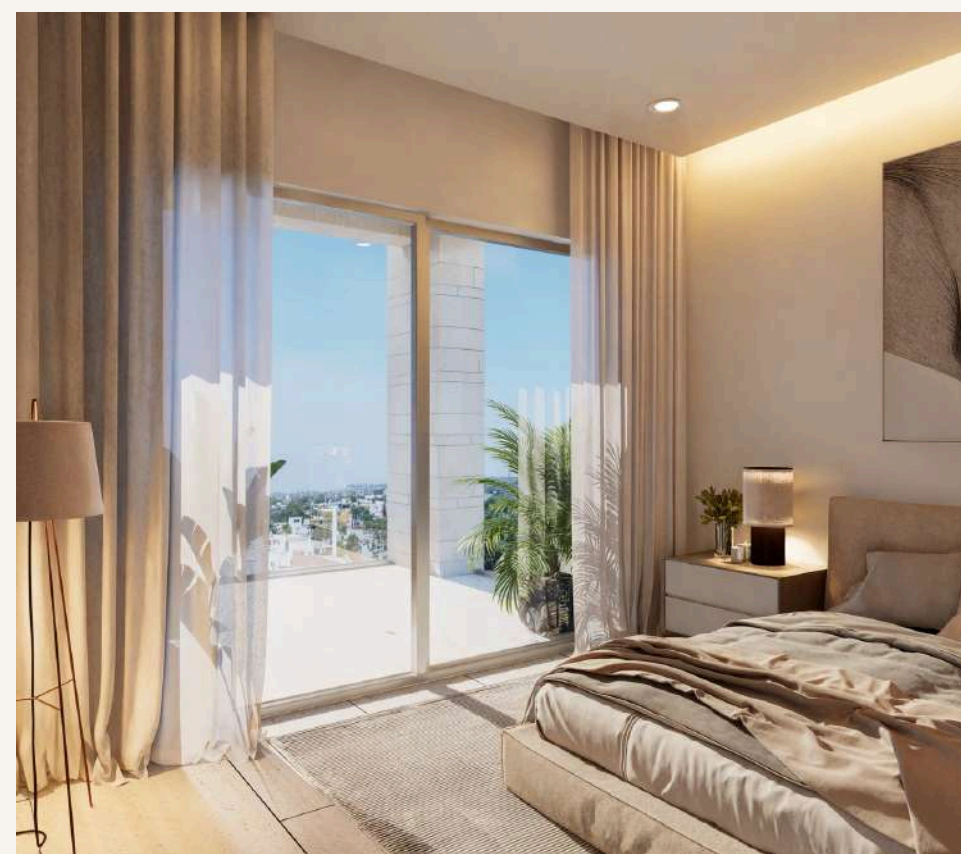
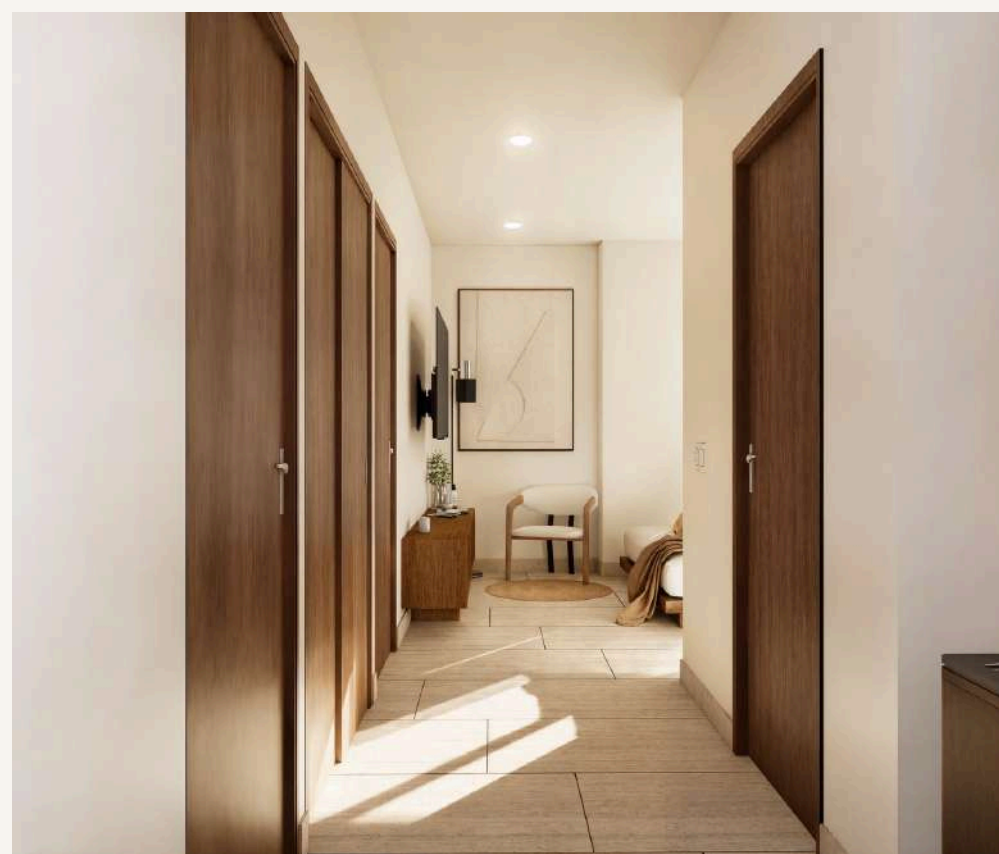
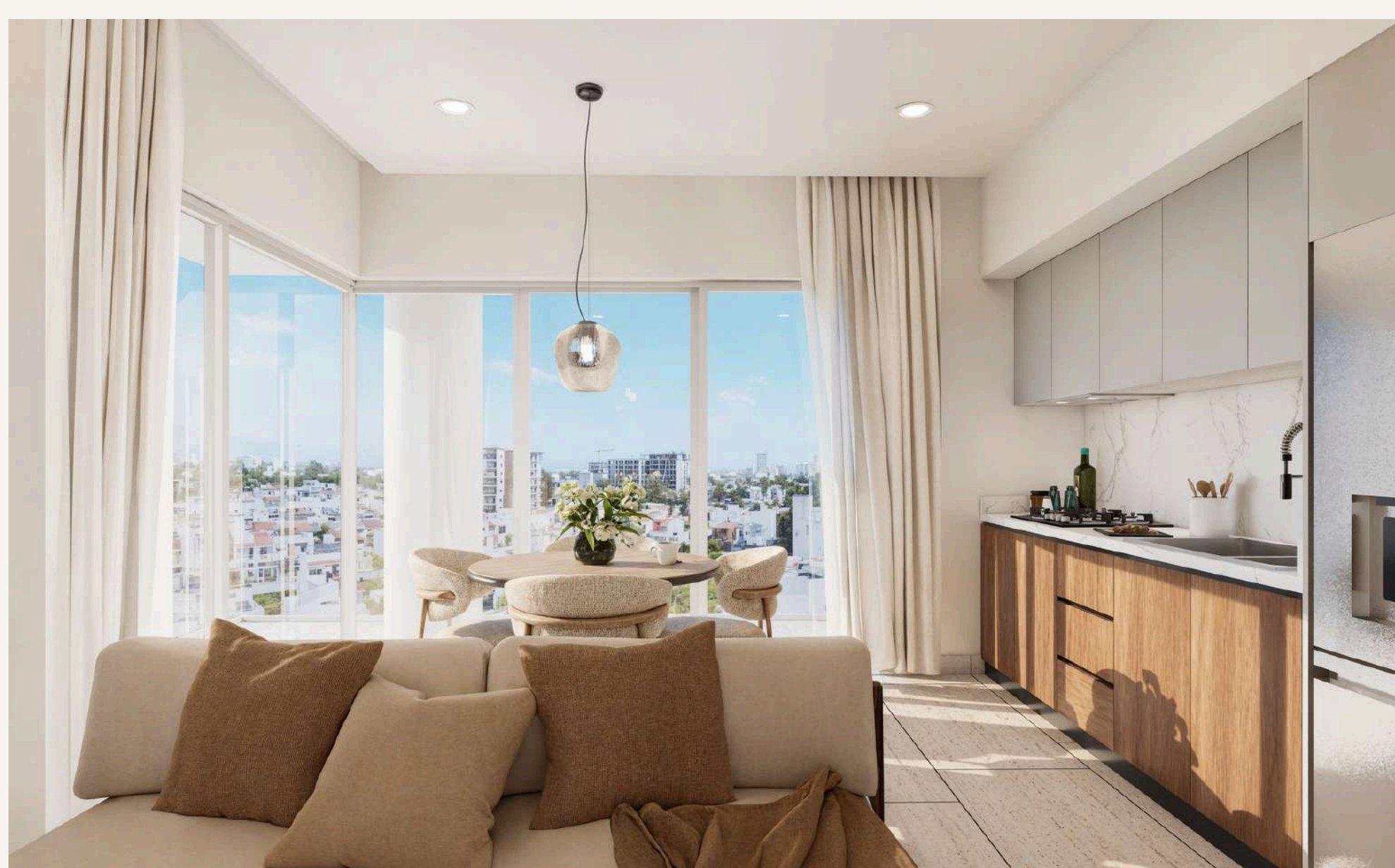
It offers a unique sense of openness and privacy thanks to its corner location, where light and views enhance every space. Designed for those seeking greater freedom, comfort, and presence, it is a home distinguished by its character and exclusivity.

| 2 BED 2 BATH | LIVING ROOM
| 104.28 m² | DINING ROOM
| KITCHEN | LAUNDRY ROOM



Apartment

Type C



Finishes and Materials



Kitchen



**Kitchen Sink
ECLIPSE**

Manufactured in 16-gauge steel, with a brushed finish.



**Single-handle
faucet**

Profesional (53x22cm)



Gas Stove

30" Xpert Flamma gas range with six burners, gray finish, by Whirlpool.



Range hood

60 cm built-in unit in stainless steel.

Bathrooms



WC OLIMPIA

Toilet, bowl and tank, Olimpia round model with standard height and exposed trap.



High single-handle faucet for sink, Piazza.

Handle marked with hot and cold temperature indicator. Chrome finish.



Above-counter Alaska sink without overflow.

High-gloss ceramic tile, Grade "A," with increased thickness for enhanced durability. White color.

Bathrooms



H3304 Showerhead

8" round showerhead with arm and escutcheon, anti-limescale feature. Chrome finish.



**Single robe hook,
Piazza**

*PIA 106. Single robe hook,
Piazza. Chrome finish.*



**Piazza single
towel bar**

*PIA 106. Single towel bar,
Piazza. Chrome finish.*

Bathrooms



**Wall-mounted
towel bar**

*Classic II 45 cm towel bar.
Chrome finish.*



Porta papel Piazza

Model PIA 117. Chrome finish.



**Piazza single-handle shower or
tub faucet without diverter.**

*Piazza single-handle shower
or tub faucet without diverter.
Chrome finish.*

Floors and Tiles



Castel

Lugano 60x120 cm



Cesantoni

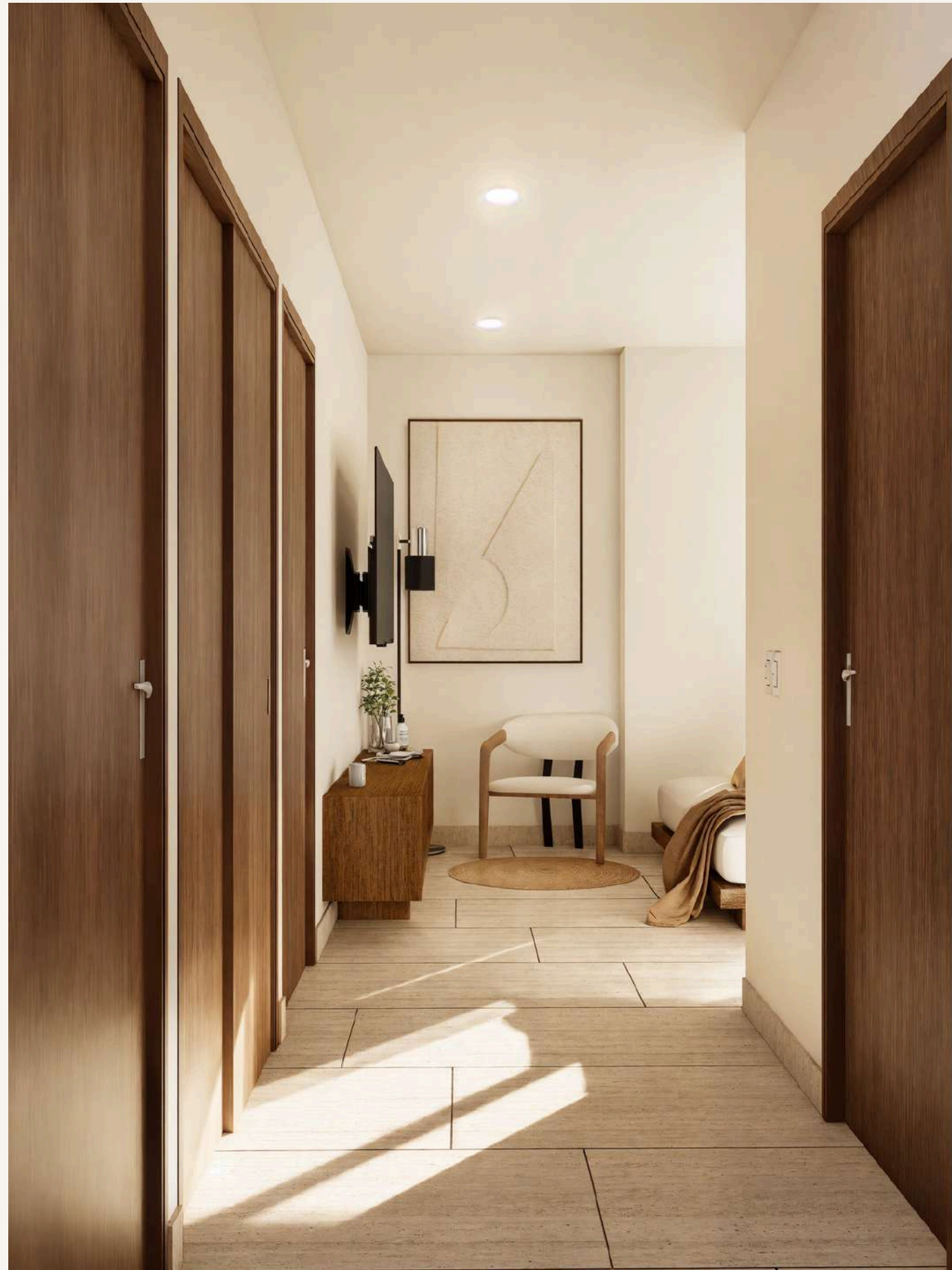
BOTEV | Piedra | Supergres
Rectified 60 x120 cm



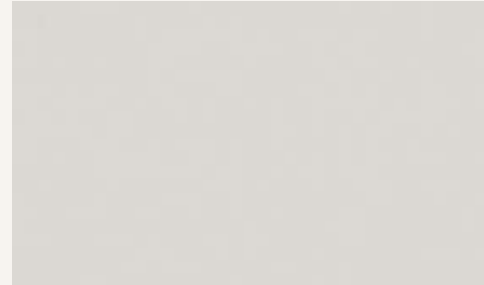
Mythos

DELFO
33,4 X 33,4 cm. DLF25Y I1





Woodwork



Arauco

Light gray



Cesantoni

Amber

Cubiertas



Italmex

Calacatta quartz
sennia HF1- 611

Commercial Spaces and Offices

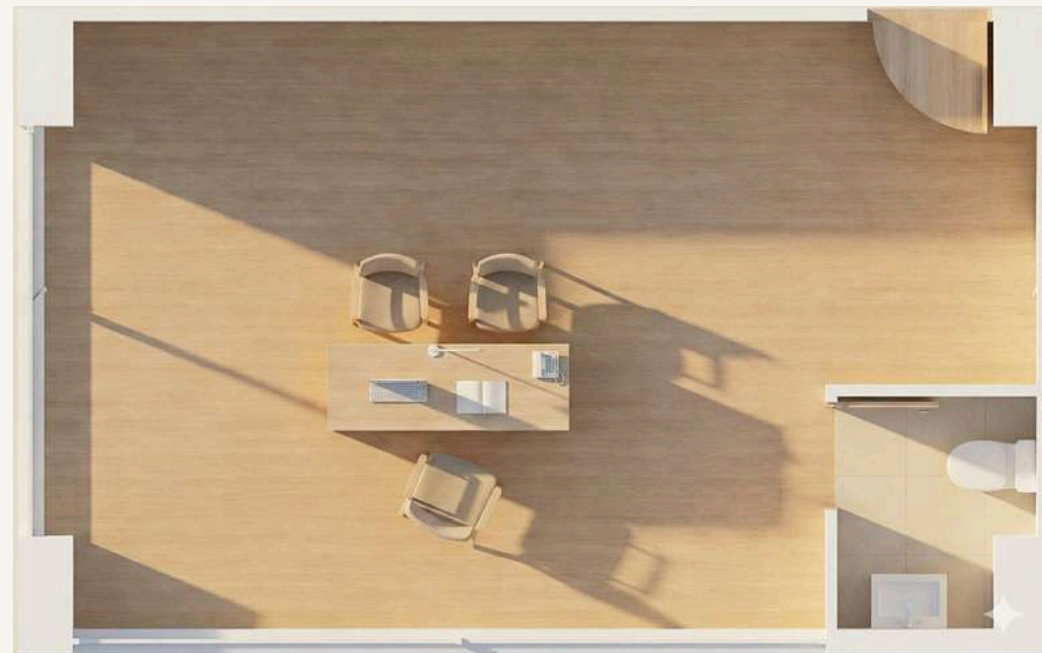
desde los 12.78 m²



Commercial Spaces and Offices

Spaces designed to foster ideas, brands, and projects in a modern, well-maintained environment, featuring versatile layouts, a private half bathroom, and access through a monitored lobby. Integrated with elevators and landscaped areas, they offer a comfortable and professional experience for both clients and collaborators.

- | ½ BATHROOM
- | FROM 14.78 M²
- | LOBBY AND SECURITY





Secure your next investment



Contact a sales representative:

 **Karim Soto**

 **+52 322 100 4934**

 **karim@elengornrealtors.com**

Marketed by:



ELENGORN REALTORS
VALLARTA • NAYARIT



GRANDES LAGOS
Living





ELENGORN REALTORS

VALLARTA • NAYARIT